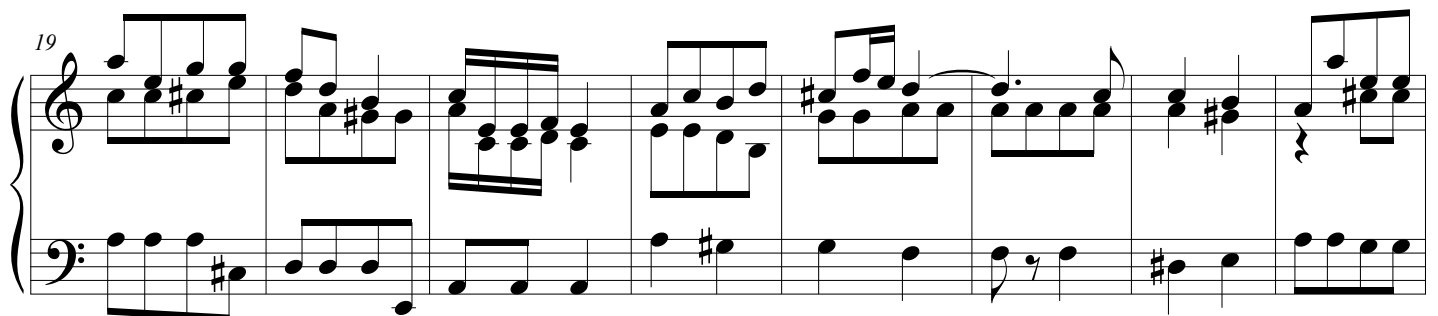
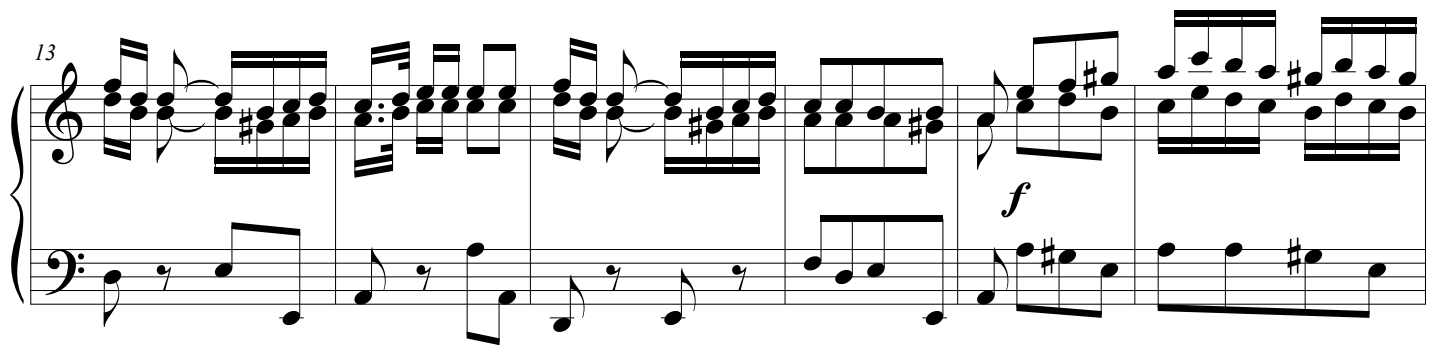
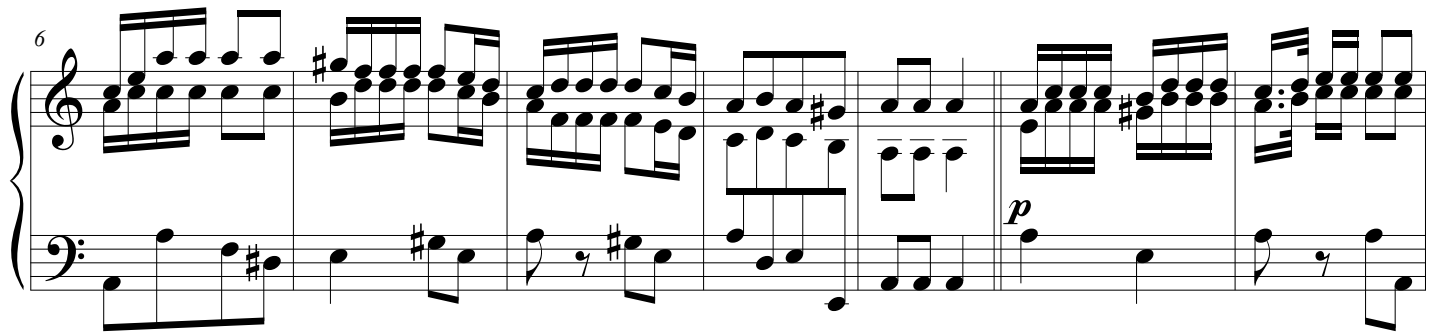
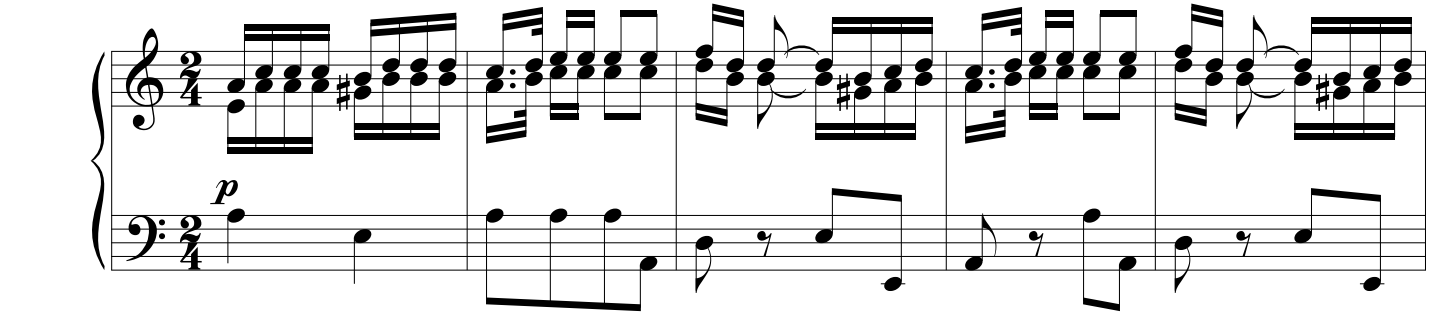


# Salve, Regina

José Joaquim Emerico Lobo de Mesquita (1746 - 1805)

Parte de Continuo por Rafael Sales Arantes

Lento ♩ = 40



27

*p*

34

*p*

42

*p*

**Allegro molto** ♩ = 150

51

*f* *p*

61

*f*

71

Measures 71-81. Treble clef, key of B-flat major. Measure 71 starts with a piano (*p*) dynamic. Measure 81 ends with a forte (*f*) dynamic. The piece features a mix of eighth and sixteenth notes, with some measures containing rests.

82

Measures 82-90. Treble clef, key of B-flat major. Measure 82 starts with a piano (*p*) dynamic. Measure 90 ends with a piano (*p*) dynamic. The piece features a mix of eighth and sixteenth notes, with some measures containing rests.

91

Measures 91-100. Treble clef, key of B-flat major. Measure 91 starts with a forte (*f*) dynamic. Measure 100 ends with a 2/4 time signature change. The piece features a mix of eighth and sixteenth notes, with some measures containing rests.

Larghetto ♩ = 30

100

Measures 100-106. Treble clef, key of B-flat major, 2/4 time signature. Measure 100 starts with a piano (*p*) dynamic. Measure 106 ends with a forte (*f*) dynamic. The piece features a mix of eighth and sixteenth notes, with some measures containing rests.

107

Measures 107-114. Treble clef, key of B-flat major, 2/4 time signature. Measure 107 starts with a piano (*p*) dynamic. Measure 114 ends with a piano (*p*) dynamic. The piece features a mix of eighth and sixteenth notes, with some measures containing rests.