

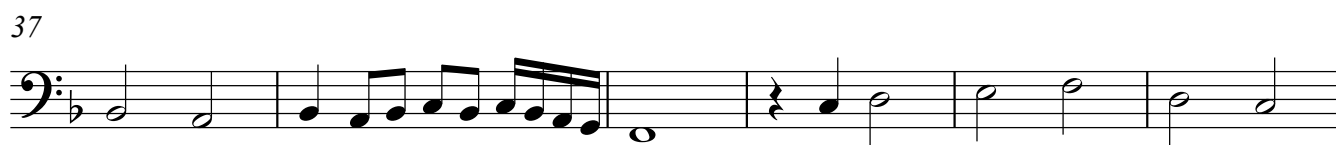
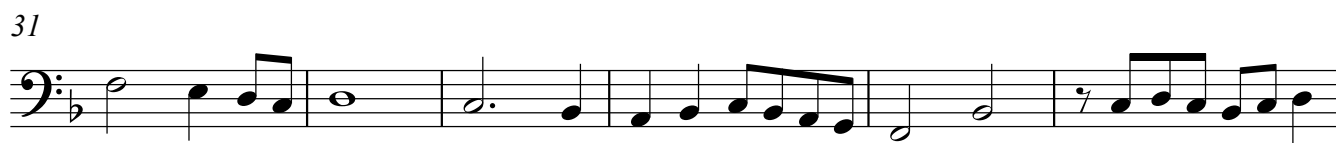
Bass Viol

# Tiento del Sexto Tono con primera y segunda parte

Primera Parte.

Antonio de Cabezon (1510-1566)

$\text{♩} = 88$



65



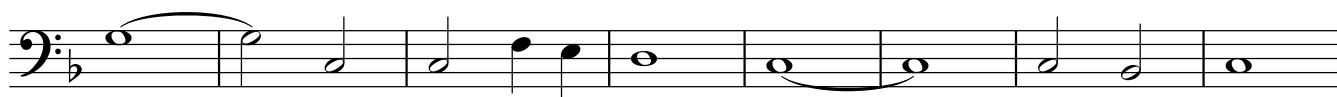
70



76



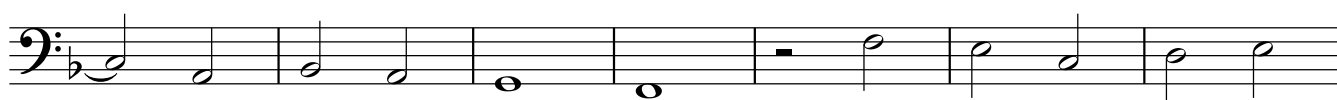
83



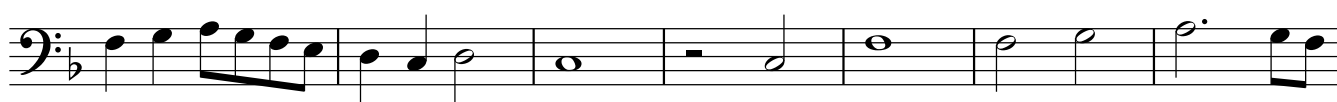
91



98



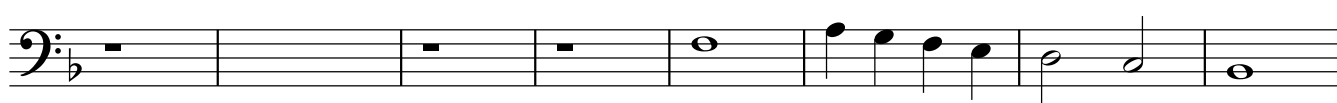
105



112



119



128



134



140



147



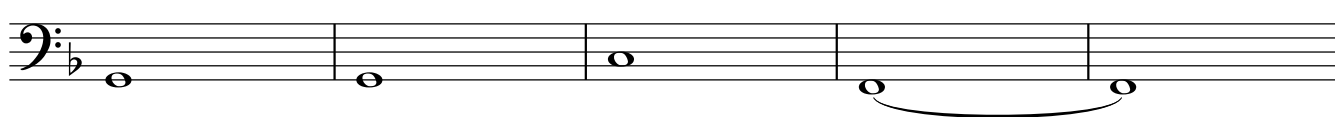
154



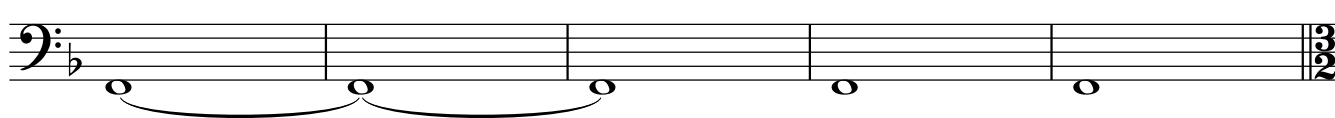
161



169



174



# Segunda Parte

4

Bass Viol

179



186

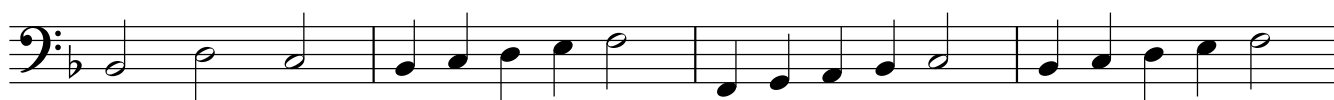
G in Pedrell



191



197



201



206



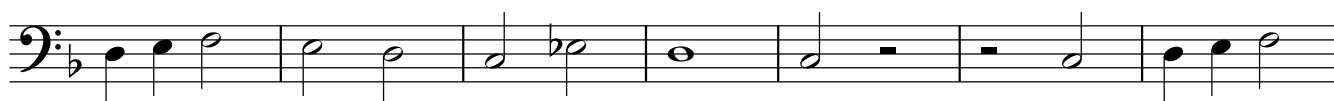
214



218



226



233

