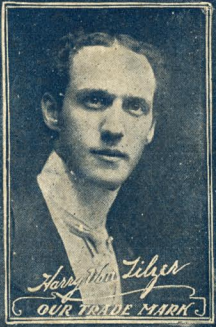


IN THE EVENING BY THE MOONLIGHT (DEAR LOUISE)



HARRY VON TILZER'S
LATEST
LOVE
BALLAD
HIT



WORDS BY
ANDREW
B.
STERLING



MUSIC BY
HARRY
VON
TILZER

MAINE MUSIC CO.
ROCKLAND



Essexington

Try this over on your Piano.

Where the Morning Glories Twine Around the Door.

Words by
ANDREW STERLING.

Music by
HARRY VON TILZER.

Andante Moderato.

mf

1. Down in New Eng-land, far, far a-way, Back to the home-stead on the
2. Down in New Eng-land, far, far a-way, Pic - ture a moth-er filled with

hill; joy, Oft in my fan- cy, Greet - ing her lost one, fond - ly I stray, just hear her say,

Dream - ing a - lone when all is still.
Kiss me a - gain, I love my boy.

p

All Rights Reserved.

Copyright MCMV by Harry Von Tilzer Music Pub. Co., 37 West 28th St., N.Y.
Chicago Office, 67 Clark St., Oneonta B'ldg.

English Copyright Secured.

Complete copies may be had where you bought this.

"In the Evening by the Moonlight, Dear Louise"

Words by
ANDREW B. STERLING.

Music by
HARRY VON TILZER.

Andante moderato.

The piano introduction is written in a 2/4 time signature with a key signature of two flats (B-flat and E-flat). It begins with a mezzo-forte (*mf*) dynamic. The right hand features a series of chords and eighth-note patterns, while the left hand provides a steady accompaniment. The tempo is marked *Andante moderato*, and the piece concludes with a *poco a poco rall.* (ritardando) instruction.

The first system of the song features a vocal line and piano accompaniment. The vocal line is in a soprano range, with lyrics: "When the sum-mer day is dy-ing, dear Lou-ise, ——— And the Thro'the cot-ton fields we'll wan-der, dear Lou-ise, ——— Past the". The piano accompaniment includes a left-hand part labeled "L.H." with a piano (*p*) dynamic. The music continues with a *rit.* (ritardando) and a fermata symbol.

The second system of the song features a vocal line and piano accompaniment. The vocal line is in a soprano range, with lyrics: "moon is shin-ing far a-bove, ——— Then my old plan-ta-tion, hand in hand, ——— While the". The piano accompaniment continues with a steady accompaniment. The music concludes with a fermata symbol.

heart for you is sigh-ing, dear Lou - ise, — For I long to see the face I
dark-ies o - ver yon-der, dear Lou ise, — Soft - ly sing sweet songs of Dix - ie -

love; — In the val - ley where the sweet mag - no - lia grows, — Where the
land; — I will whis - per once a - gain the sto - ry sweet, — How you'll

dear old swan-ee riv - er soft - ly flows, — Meet me when the night - in - gale sings in the
trem - ble when I kneel there at your feet, — I will take you in my arms be - neath the

trees, — In the ev - ning by the moon light, dear Lou - ise —
trees, — In the ev - ning by the moon light, dear Lou - ise —

In the Evening by the Moonlight

CHORUS.
Slowly.

Dear Lou - ise, I'm wait - ing in the moon - light, Dear Lou -

p

ise, be - neath the same old trees; ———— Come to

me my heart is pin - ing, Meet me when the stars are shin - ing, In the

poco a poco rall. e dim.

ev' - ning by the moon - light, dear Lou - ise. ————

poco a poco rall. e dim.

Try This on Your Piano

"When The Flowers Bloom in Spring-time."

"Molly Dear."

Words by
ANDREW B. STERLING.

Music by
HARRY VON TILZER.

CHORUS.

When the flow - ers bloom in spring - time, Mol - ly

p-f

This system contains the first two lines of musical notation. The top line is the vocal melody, and the bottom two lines are the piano accompaniment. The key signature has two flats (B-flat and E-flat), and the time signature is 4/4. The lyrics are "When the flow - ers bloom in spring - time, Mol - ly". The piano part begins with a dynamic marking of *p-f* (piano-forte).

bye and bye, We'll go

This system contains the third and fourth lines of musical notation. The vocal melody continues with the lyrics "bye and bye, We'll go". The piano accompaniment features a rhythmic pattern of eighth and sixteenth notes.

roam - ing in the gloam - - ing, 'neath a

This system contains the fifth and sixth lines of musical notation. The vocal melody continues with the lyrics "roam - ing in the gloam - - ing, 'neath a". The piano accompaniment continues with the same rhythmic pattern.

sum - mer sky, Down in

This system contains the seventh and eighth lines of musical notation. The vocal melody concludes with the lyrics "sum - mer sky, Down in". The piano accompaniment concludes with a final chord.