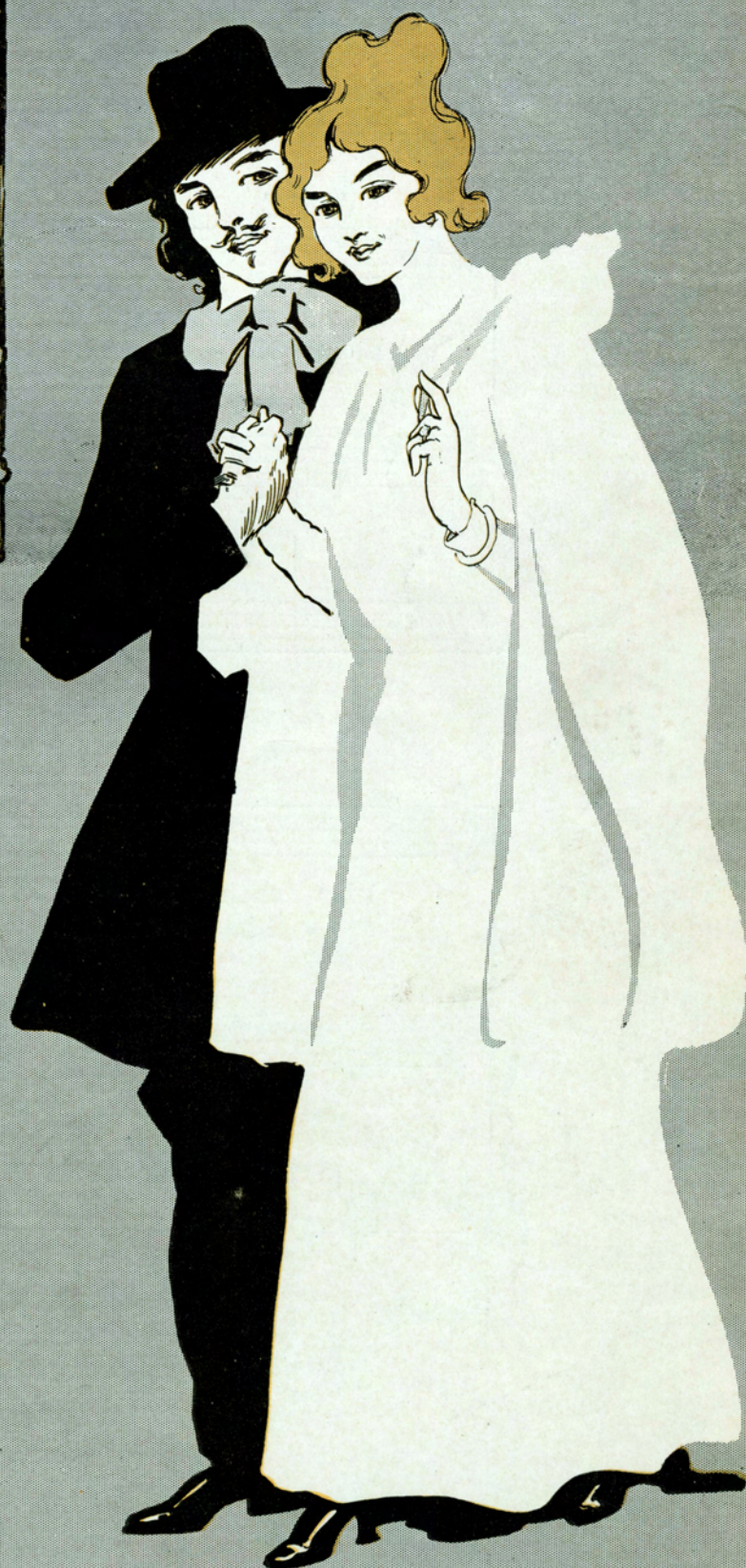
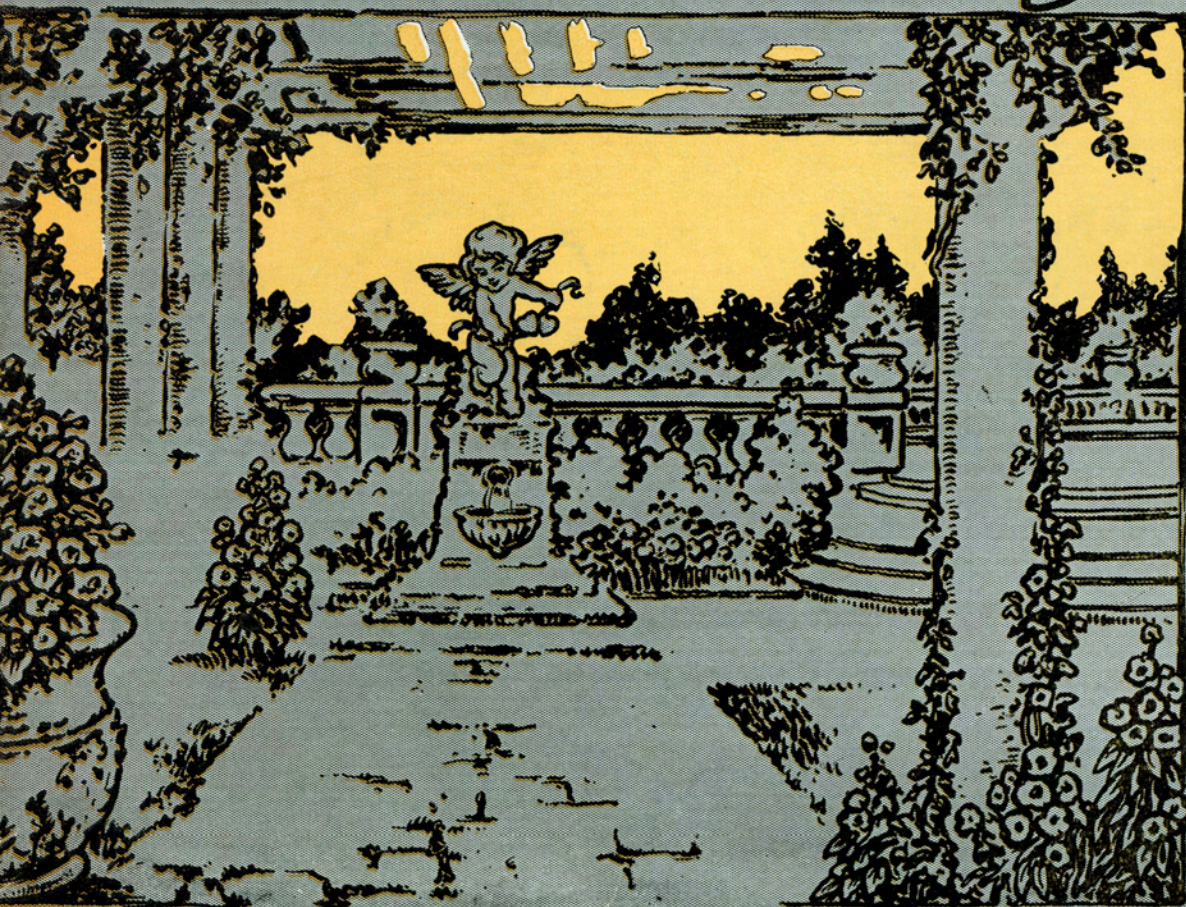


POPULAR EDITION

IF I CAME TO YOU WITH A HEART BOWED DOWN

Song

WORDS BY
GUS KAHN
MUSIC BY
RICHARD A. WHITING



5

JEROME H. REMICK & CO.
NEW YORK DETROIT

STARME

If I Came To You With A Heart Bowed Down

(Would You Remember Me)

Words by
GUS KAHN

Music by
RICHARD A. WHITING

Moderato Andante

PIANO

mf *rit.*

The piano introduction is in 3/4 time, marked Moderato Andante. It begins with a treble clef and a key signature of three flats (B-flat major or D-flat minor). The melody starts with a half note G4, followed by a quarter note A4, and then a series of eighth notes: B4, A4, G4, F4, E4, D4, C4. The bass line consists of a steady eighth-note accompaniment: G3, A3, B3, A3, G3, F3, E3, D3, C3. The piece concludes with a ritardando (rit.) and a final chord of G3-B3-D4.

VOICE

The Spring re - turns to fill the world with glad - - ness, To
Each lit - tle bird un - to its mate is call - - ing, The

p

The voice part begins with a treble clef and a key signature of three flats. The melody is: G4, A4, B4, A4, G4, F4, E4, D4, C4, B3, A3, G3. The piano accompaniment starts with a treble clef and a key signature of three flats. The melody is: G4, A4, B4, A4, G4, F4, E4, D4, C4, B3, A3, G3. The bass line consists of a steady eighth-note accompaniment: G3, A3, B3, A3, G3, F3, E3, D3, C3. The piece concludes with a ritardando (rit.) and a final chord of G3-B3-D4.

kiss each lit - tle flow'r with morn - ing dew; _____ I
sun - shine bids the ros - es bloom a - new; _____ While

The voice part continues with a treble clef and a key signature of three flats. The melody is: G4, A4, B4, A4, G4, F4, E4, D4, C4, B3, A3, G3. The piano accompaniment starts with a treble clef and a key signature of three flats. The melody is: G4, A4, B4, A4, G4, F4, E4, D4, C4, B3, A3, G3. The bass line consists of a steady eighth-note accompaniment: G3, A3, B3, A3, G3, F3, E3, D3, C3. The piece concludes with a ritardando (rit.) and a final chord of G3-B3-D4.

Copyright MCMXIV by JEROME H. REMICK & CO., New York & Detroit

Copyright, Canada, MCMXIV by Jerome H. Remick & Co.

Propiedad para la Republica Mexicana de Jerome H. Remick & Co., New York y Detroit. Depositada conforme a la ley

Performing rights reserved

won - der would it bring you joy or sad - - ness, If
 all the world is glad my tears are fall - - ing, No

cresc

I re - turned, sweet - heart, to you. _____
 Spring shall come till I have you. _____

poco rit

CHORUS

If I came to you with a heart bowed down — Would

p-f

you re - mem - ber me? Tho' your voice mur-mured "go" would your

eyes let me know, That you still loved me ten - der - ly? _____ Would you

care to re - new the love that was true, In - days that used to

be? _____ If I came to you with a heart bowed down Would

rit e dim you re - mem - ber me? 1 If 2 me? _____

rit e dim D.C.

If I Came To You With A Heart Bowed Down

5

QUARTETTE

For Mixed or Male Voices

Words by
GUS KAHN

Music by
RICHARD A. WHITING
Arr. by Ribé Danmark

CHORUS

Omit in Mixed Qt.

(1st TENOR) (*Male Qt. only*)

If I came to you with a heart bowed down would you re - mem - ber

SOPRANO
ALTO

Omit in Male Qt.

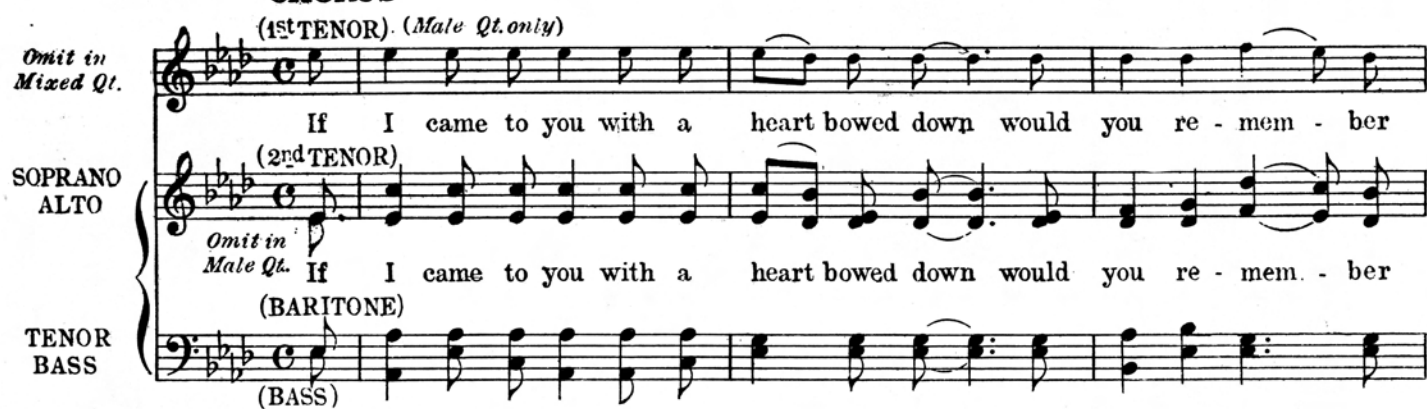
(2nd TENOR)

If I came to you with a heart bowed down would you re - mem - ber

(BARITONE)

TENOR
BASS

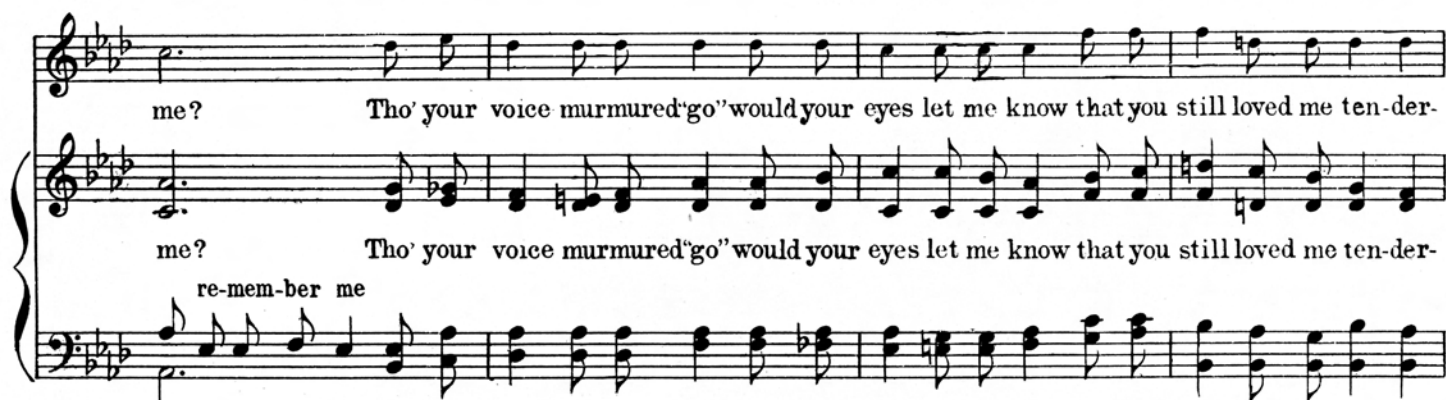
(BASS)



me? Tho' your voice murmured "go" would your eyes let me know that you still loved me ten-der-

me? Tho' your voice murmured "go" would your eyes let me know that you still loved me ten-der-

re-mem-ber me



ly. ——— Would you care to re-new the love that was true In days that used to

ly. ——— Would you care to re-new the love that was true In days that used to

ten-der - ly

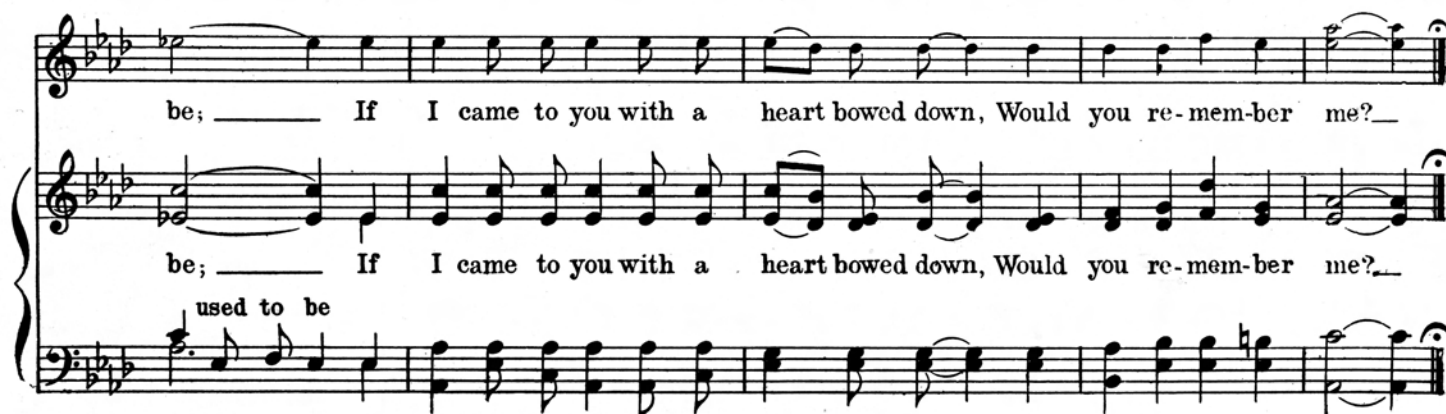
care to



be; ——— If I came to you with a heart bowed down, Would you re-mem-ber me? —

be; ——— If I came to you with a heart bowed down, Would you re-mem-ber me? —

used to be



Copyright MCMXIV by Jerome H. Remick & Co., New York & Detroit
Performing Rights Reserved International Copyright Secured