

# Aasamaa for string quartet

Allegretto

Christine Snowdin

Violin I



Violin I



Violin I



Violin I



Violin I



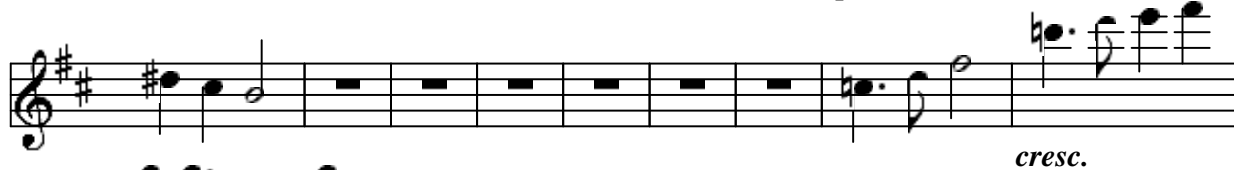
Violin I



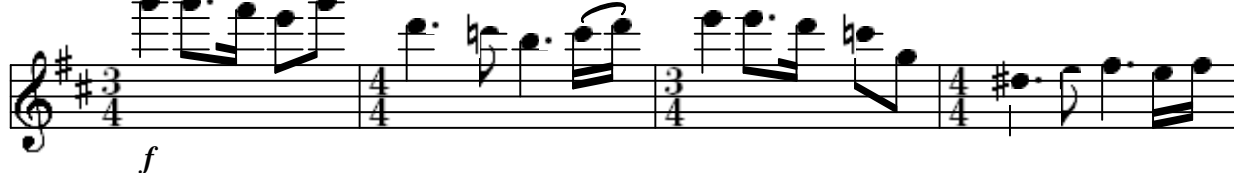
Violin I



Violin I



Violin I



Violin I




Violin I



Violin I



Violin I



Violin I staff 1: Treble clef, key signature of two sharps (F# and C#). The staff contains two measures. The first measure has a dotted quarter note on G4, an eighth note on A4, and a quarter note on B4. The second measure has a dotted quarter note on A4, an eighth note on G4, and a quarter note on F#4. A fermata is placed over the first measure, and a hairpin indicating a crescendo is positioned below the staff.

Violin I

Coda



Violin I staff 2: Treble clef, key signature of two sharps. The staff contains two measures. The first measure has a dotted quarter note on G4, an eighth note on A4, and a quarter note on B4. The second measure has a dotted quarter note on A4, an eighth note on G4, and a quarter note on F#4. A fermata is placed over the first measure, and a hairpin indicating a crescendo is positioned below the staff.

Violin I



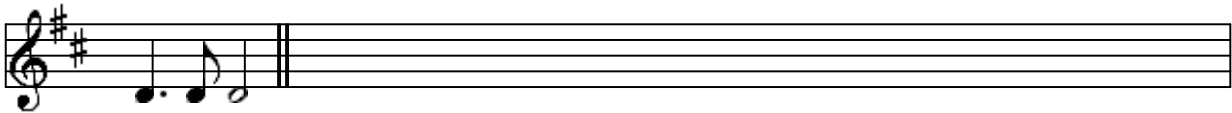
Violin I staff 3: Treble clef, key signature of two sharps. The staff contains two measures. The first measure has a dotted quarter note on G4, an eighth note on A4, and a quarter note on B4. The second measure has a dotted quarter note on A4, an eighth note on G4, and a quarter note on F#4. A fermata is placed over the first measure, and a hairpin indicating a crescendo is positioned below the staff.

Violin I



Violin I staff 4: Treble clef, key signature of two sharps. The staff contains two measures. The first measure has a dotted quarter note on G4, an eighth note on A4, and a quarter note on B4. The second measure has a dotted quarter note on A4, an eighth note on G4, and a quarter note on F#4. A fermata is placed over the first measure, and a hairpin indicating a crescendo is positioned below the staff.

Violin I



Violin I staff 5: Treble clef, key signature of two sharps. The staff contains two measures. The first measure has a dotted quarter note on G4, an eighth note on A4, and a quarter note on B4. The second measure has a dotted quarter note on A4, an eighth note on G4, and a quarter note on F#4. A fermata is placed over the first measure, and a hairpin indicating a crescendo is positioned below the staff.