

Tuba

Alma de la Tierra

Fernando Giunta

1)Edem-Atuel y sus Amigos-Fiesta en la Aldea

Tranquilo $\text{♩} = 76$

5

5

pp

p

13

1

mf

mf

18

rit. a tempo

2

1

21

p

44

mp

A

48

rit. a tempo

7

59

rit. a tempo $\text{♩} = 116$

24

88

p

91

mf

2

96 a tempo **1** **B**

100 *mf*

103 7

112 *mf*

115 12

130 9 rit.....a tempo 5

147 Vln. I

149 **C** *f* *sfz* *mf*

152 *mf* *f* *mf*

154 rit....

10

f *mf* *f*

167a tempo **1** a tempo

171 **2** **D** a tempo **11** **1**

186 **1** *f* *ff* *f*

190 **E** Allegro ♩ = 86 **43**

236 *mf* *gliss.* *fp* *mf*

242 *mf* *mf* *fp*

248 *fp*

254

258 *f*

263 **5**

268 **23**

294 *f*

299 *f*

304 *fp* *mf*

309 **F**

314 *f*

319 *mf*

325 **4**

332 **2** *mf*

337 *rit.* *fp*

Tamb.

341 **2** **1** **25** **rit.**..... $\text{♩} = 30$ **G**

372 **17** **f**

392

397 **4** **f**

404 **17** **mf**

425 **H** **p** **mf**

431 **4**

439 **mf**

444 **I** $\text{♩} = 82$

449 **rit.**..... $\text{♩} = 76$ **ff** **ff**

2-TACET

Tuba

Alma de la Tierra

Fernando Giunta

3-Guerra por las Tierras

♩ = 126

5

9

1. 2.

13

A a tempo

46

B

C

66

73

76

82

ff *ff* *f*

ff

rit......

fz *fz*

fp

p *p* *p*

gliss. *gliss.* *gliss.*

mf

f

85 **D** 7 3

98 *mf*

103 *gliss.*

108 **E** 1 1 *f*

114 2 14

133 **F** 3 *fp* *p* *gliss.*

140 *mp* *gliss.*

146 *f* *f* **G** 1 *f*

151 *f*

155

11

170

rit.....

178

H Allegro justo $\text{♩} = 120$

37

mf

221

2

I

1

mf

229

fp

236

3

mf

244

252

J

259

8

271 **K** 20 Bsn. 1

294 **L**

mf

300 **M** 19

mf

323 **N** 19 8

f

353 **O** 4

f

362 **O** 15 3 7 3 1

rit..... $\text{♩} = 80$ molto rit..... Lento

391 **P** $\text{♩} = 52$ Largo $\text{♩} = 56$ 4

mf *fp*

399

mf *f*

404 **Q** molto rit... a tempo

mf *ff*

Tuba

4-Alma de la Tierra

Fernando Giunta

4-Atuel y clara uyen a la momtaña-Sueña-El milagro

Andante ♩ = 54 **19** rit..... a tempo **10** rit..... ♩ = 92 **A** **1**

33 **2** ♩ = 100 **2** rit..... a tempo **4** rit..... **1** Andante ♩ = 58

44 **5** rit..... a tempo **1** **5** rit..... a tempo **4** rit.....

61 **B** **1** **2** **1** rit..... ♩ = 62 **7**

73 accel..... ♩ = 110 **1** *p*

78 **C** ♩ = 110 **1** **2** Vln.

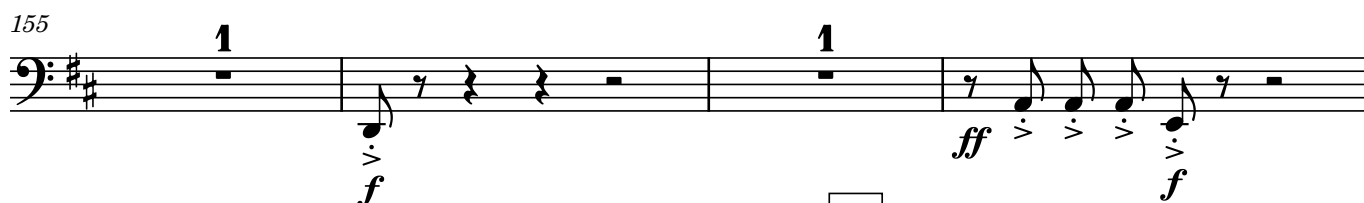
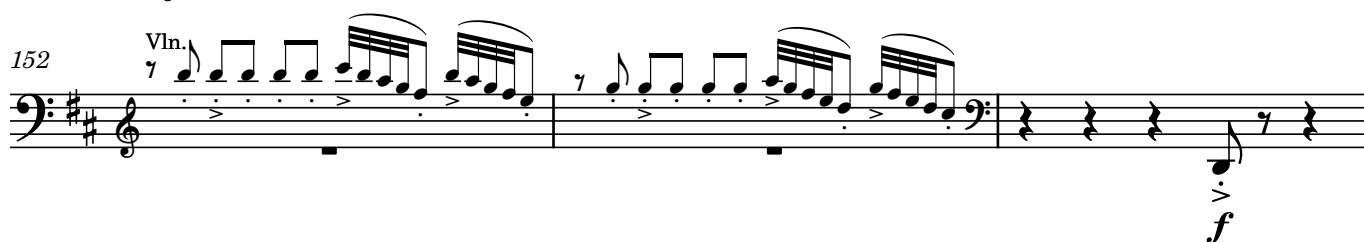
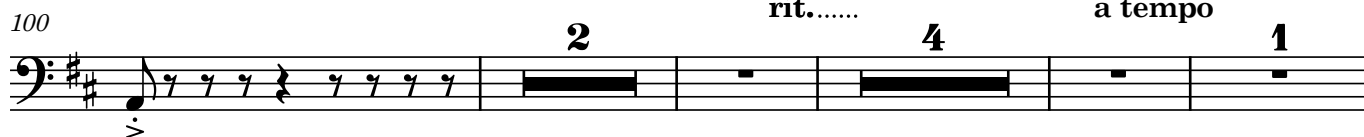
83 accel..... **D** ♩ = 120

86 **12**

E

rit.....

a tempo



166

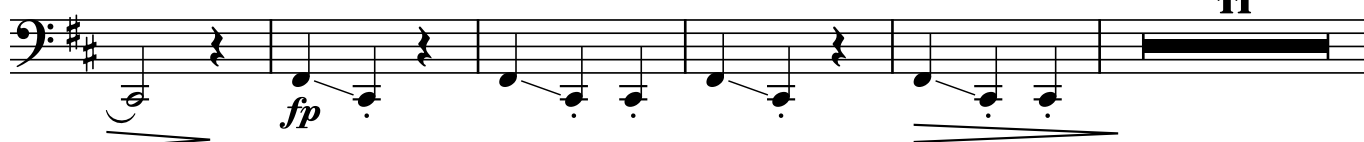
rit.....



174

I Adagietto ♩ = 69

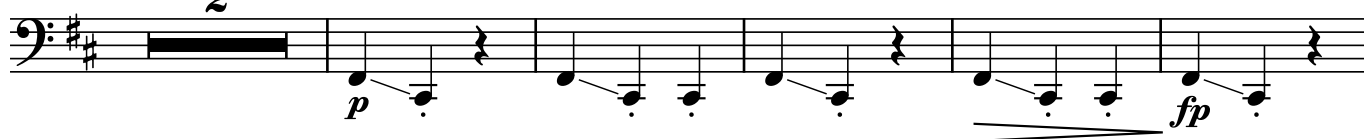
11



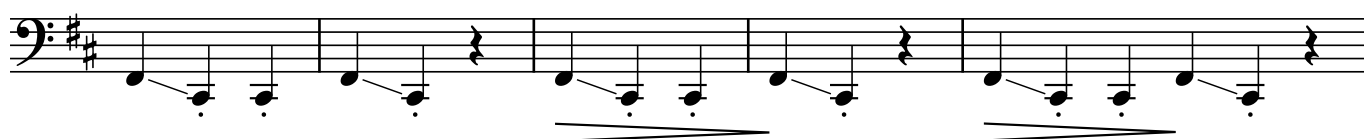
190

rit.....a tempo

2



197



202

rit.....

3

2

J a tempo

9



218

Riten. ♩ = 60

5

K Andante ♩ = 90

5

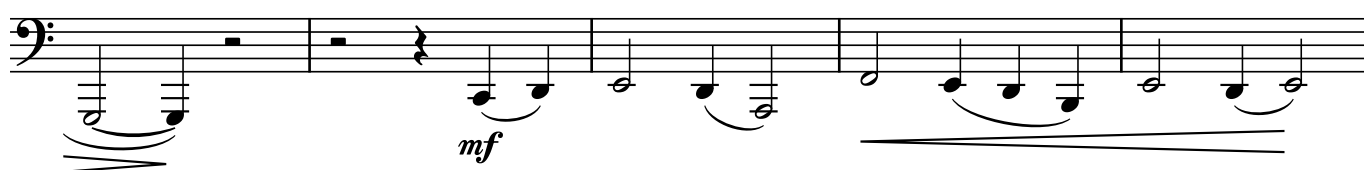


231



236

a tempo



241

rit.....



246 **L** ♩ = 76 **10**

260 **M**

265 **N** rit. ♩ = 84

270 **molto rit.** **a tempo**

ff