

Go Nome

The
Greatest of all
Comic Darkey Songs



By
Monroe H. Rosenfeld
Author of "I don't care if you never come back"
and other hits.

J.W. Jenkins  Sons Music Co.

FRANCIS, DAY & HUNTER, LONDON, ENG.

5

TRY THESE ON YOUR PIANO

COMPLETE COPIES FIFTY CENTS EACH

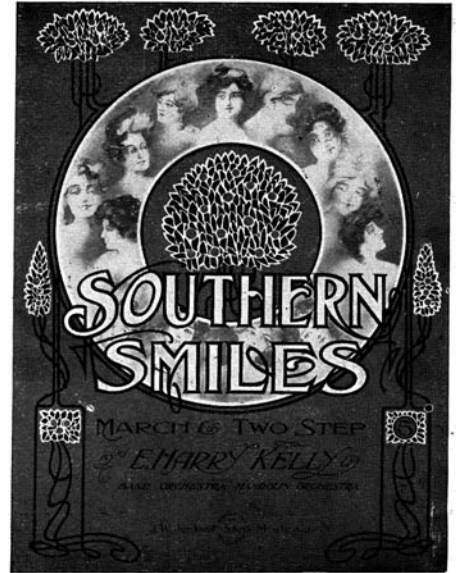
By E. HARRY KELLY

SOUTHERN SMILES
MARCH AND TWO STEP

Not too fast.

Copyright 1917 by J. W. Jenkins Sons Music Co.

PLAYED BY ALL
THE LEADING
ORCHESTRAS
THROUGHOUT
THE COUNTRY



**Morning
Noon and
Night**
or Dear Will You
Love Me Always

Words by EARL GRIFFITH
Music by E. H. WILLIAMS

J. W. Jenkins Sons Music Co.



“MORNING NOON AND NIGHT”
OR
DEAR WILL YOU LOVE ME ALWAYS

Words by EARL GRIFFITH. Music by E. H. WILLIAMS.

CHORUS.
Tempo di Falto.

Copyright 1917 by J. W. Jenkins Sons Music Co.

PUBLISHED BY
THE J. W. JENKINS' SONS MUSIC COMPANY
KANSAS CITY, MO.

GO HOME.

Words and Music By
All^o Mod^{to}.

MONROE H. ROSENFELD.

till voice.

The piano introduction for the first system is written in 2/4 time. It begins with a treble clef and a bass clef. The right hand starts with a series of chords and eighth notes, while the left hand provides a steady accompaniment. Dynamics include *f* (forte) and *ff* (fortissimo) in the first half, and *p* (piano) in the second half.

The first line of the song features a vocal melody and piano accompaniment. The vocal line starts with a *p* (piano) dynamic. The lyrics are: "A high toned coon they called Bill Smith, once cour - ted Han - nah Jones And Bill Smith was very - sad and said, 'Oh please don't make me go I'll". The piano accompaniment is in the bass clef with a *p* dynamic.

The second line of the song continues the vocal melody and piano accompaniment. The lyrics are: "Sun-day night a week a - go, he called to tell his love He took her hand and tell you hon-ey what I'll do if you'll give me a show, I'll scrub the floor and". The piano accompaniment has a *mf* (mezzo-forte) dynamic.

The third line of the song concludes the vocal melody and piano accompaniment. The lyrics are: "said, 'You are the ap - ple of my soul' Oh won't you be my hon - ey gal, my build the fire and find the chick - en nest, And pluck the fowl and eat the bones, and". The piano accompaniment has a *rit.* (ritardando) marking.

mf

choco-late col - ored dove, I've giv - en up Miss Bertha Brown be -
give you all the breast, The wa - ter mel - on rine I'll eat, and

mf

rall.

cause she's black and tan And since I've met you, Han-nah dear I am a differ-ent
save the meat for you And when your teeth am all worn out your pork chops I will

rall.

a tempo.

man, I am, But Han - nah quick - ly turned a-way and shook her kin - ky
chew for you, But Han nah Jones she turned a-way and sad - ly shook her

a tempo.

head, And point-ing to the kich-en door, these words to him she said.
head, And point-ing to the kich-en door, with flash-ing eye she said.

Chorus.

ff >

Go home! Get out of here and don't come back, or I'll

ff

Detailed description: This system contains the first two measures of the chorus. The vocal line starts with a half note 'Go' followed by a quarter rest, then a quarter note 'home!' followed by a quarter rest. The piano accompaniment features a steady eighth-note pattern in the right hand and a similar eighth-note pattern in the left hand. Dynamics include a forte (*ff*) marking with an accent (>) on the first measure.

put all the cop - pers on your track, You're a wick - ed coon, I see it in your

Detailed description: This system contains the next two measures. The vocal line continues with eighth notes: 'put all the cop - pers on your track, You're a wick - ed coon, I see it in your'. The piano accompaniment continues with the eighth-note pattern. Dynamics include a forte (*ff*) marking.

eye _____ If you're false to her, you'll be false to me You're a good for nothing and we

Detailed description: This system contains the next two measures. The vocal line has a long note for 'eye' followed by a rest, then 'If you're false to her, you'll be false to me You're a good for nothing and we'. The piano accompaniment continues with the eighth-note pattern. Dynamics include a forte (*ff*) marking.

can't a - gree So Mis - ter coon, go fly a - way, good bye. _____ *8va.*

ff *ff*

Detailed description: This system contains the final two measures. The vocal line ends with 'can't a - gree So Mis - ter coon, go fly a - way, good bye.' followed by a long note and a rest. The piano accompaniment continues with the eighth-note pattern. Dynamics include a forte (*ff*) marking. The system ends with an 8va. marking.

Try This On Your Piano.

It is the Best Genuine Ragtime Two-Step Published.

A COTTON PATCH TWO-STEP.

By CHARLES A. TYLER.

KING OF RAGTIME COMPOSERS.

Tempo Modto.

f

mf

Copyright MCMII by J. W. Jenkins Sons' Music Co.

PRICE 50 CENTS.

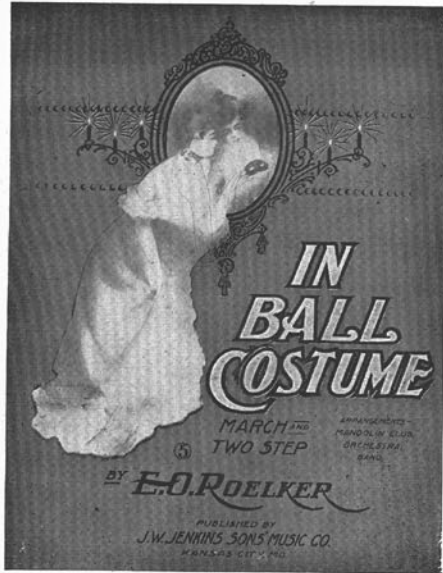
For Sale by all Music Dealers, or the Publishers

J. W. Jenkins Sons' Music Co.,

KANSAS CITY, MO.

TWO FAVORITE COMPOSITIONS

COMPLETE COPIES FIFTY CENTS EACH



To My Sister. IN BALL COSTUME. March And Two-Step.

Arranged by C. OLIN RICE.

E. O. ROELKER.

Copyright 1911 by J. W. Jenkins Sons' Music Co.

To Coralia C. Chapman

My Love will bring You back to Me.

Words by E. S. METCALFE.
REFRAIN.

Music by A. M. LANGSTAFF.

My love will s

SHINE ON! AN "ALL JOIN IN" SONG.

Words and Music by

W. WESLEY WELLS.

Shine on s

Copyright 1911 by J. W. Jenkins Sons' Music Co.

PUBLISHED BY
THE J. W. JENKINS' SONS MUSIC COMPANY
KANSAS CITY, MO.

FAVORITE PIANO SOLOS

PRICE FIFTY CENTS EACH.

HERMOSA (Beautiful) VALS.

Copyright 1907 by J. W. Jenkins Sons Music Co.

THE FLOWER GARDENER WALTZES.

By THEO. H. NORTHRUP.

Copyright 1911 by J. W. Jenkins Sons Music Co.

Dedicated To The Energy And Enterprise Of The Citizens Of Kansas City.

THE KANSAS CITY SPIRIT MARCH.

EUGENIO SORRENTINO

Copyright 1901 by J. W. Jenkins Sons Music Co., Kansas City, Mo.

VENEZUELA DANCE.

W. WESLEY WELLS

Copyright 1911 by J. W. Jenkins Sons Music Co.

PUBLISHED BY
THE J. W. JENKINS' SONS MUSIC COMPANY
 KANSAS CITY, MO.