

# CONCERTO

per Flauto solo, Violino primo, Violino secondo e Basso

Anónimo

E-Mn MP/3174/7

**Allegretto**

Basso

*Tasto solo*

5

*Tasto solo*

*p*

10

15

20

25

*p*

*f*

*p*

30

35

40

*p*

46

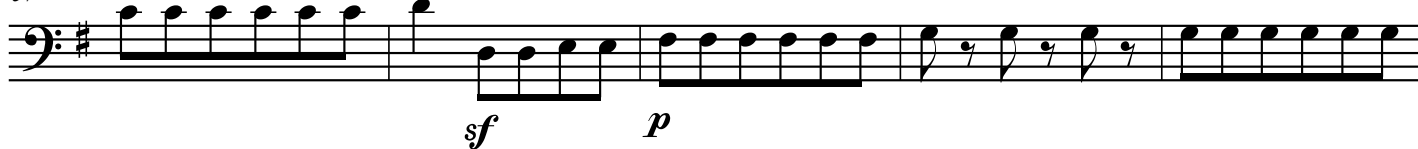
*f*

*p*

52



57



62



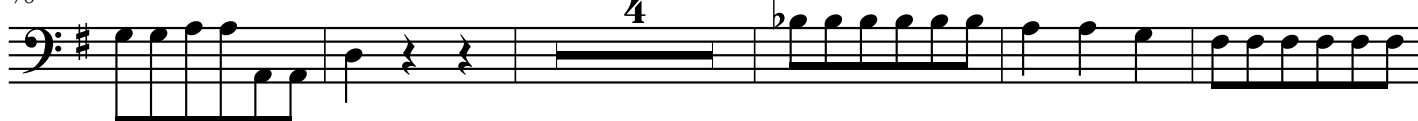
67



73



78



87



92

Ten.



97



102



107

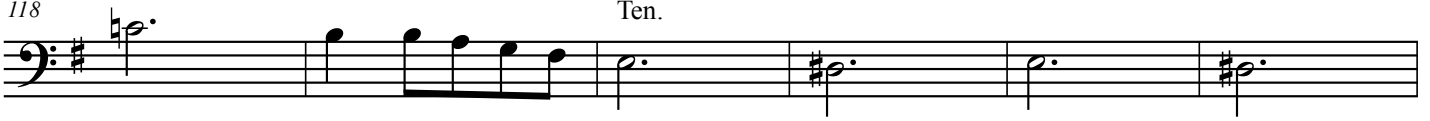


112



118

Ten.



124



129



134



139



144



149

*f* Tasto solo

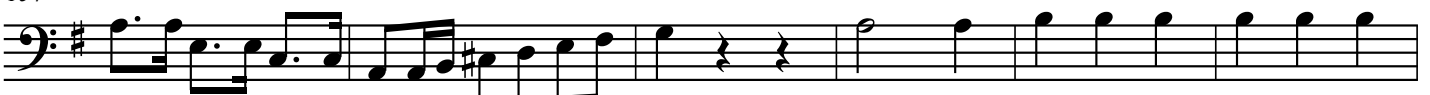


154

*Tutti*

*Tasto solo*

*p*



160



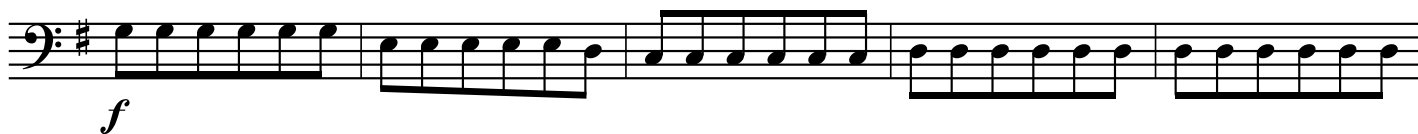
165



170



176



181



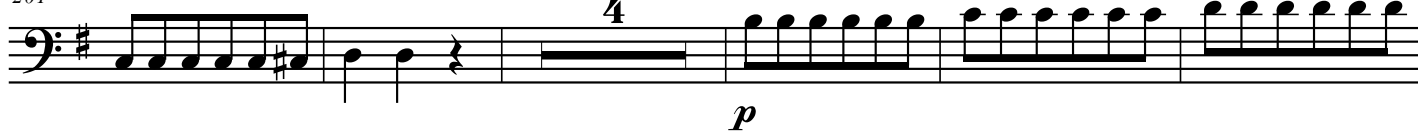
187



195



201



210



215



221



226



231



sempre piano

The bass line of 'The Rose Tree' is written in G major (one sharp) and 3/4 time. It consists of 12 measures. The notes are: G2 (quarter), A2 (quarter), B2 (quarter), A2 (quarter), G2 (quarter), F#2 (quarter), E2 (quarter), D2 (quarter), C2 (half), B1 (half), A1 (half), and G1 (half). The piece ends with a repeat sign.

Musical notation for the bass line of 'The Rose Tree'. The key signature is one sharp (F#). The melody consists of eighth and sixteenth notes, with some triplets indicated by a '3' over the notes.

The bass line of 'The Rose Tree' is written in G major (one sharp) and 2/4 time. It consists of six measures. The first measure contains a quarter note G2, an eighth note A2, and a quarter note B2. The second measure contains a quarter note C3, an eighth note D3, and a quarter note E3. The third measure contains a quarter note F3, an eighth note G3, and a quarter note A3. The fourth measure contains a quarter note B3, an eighth note C4, and a quarter note D4. The fifth measure contains a quarter note E4, an eighth note F4, and a quarter note G4. The sixth measure contains a quarter note A4, an eighth note B4, and a quarter note C5. The melody is written in treble clef on a five-line staff.

*Tasto solo*

*Tasto solo*

[illegible]

45



51



58



65



71



79



87



93



99



105



111



117



123



132



138



145



153



159

Ten.

*p*

169

*Tasto solo*

175



182



189

*p Tasto solo**Tasto solo*

196



204



214



222



232



240



246



252



258



264



270

