

CONCERTO

per Flauto solo, Violino primo, Violino secondo e Basso

Anónimo

E-Mn MP/3174/7

Allegretto

Violino
secondo

The musical score for Violino II, Allegretto, is written in treble clef with a key signature of one sharp (F#) and a 3/4 time signature. The piece begins with a dynamic of *sf* (sforzando) in measure 1. The melody is characterized by eighth and sixteenth notes, often beamed together. Measure 5 is marked with a *p* (piano) dynamic. Measure 10 is marked with a *f* (forte) dynamic. Measure 13 is marked with a *p* dynamic. Measure 16 is marked with a *f* dynamic. Measure 19 is marked with a *p* dynamic. Measure 22 is marked with a *p* dynamic. Measure 27 is marked with a *f* dynamic. Measure 33 is marked with a *f* dynamic. Measure 38 is marked with a *p* dynamic. The score includes various musical notations such as slurs, ties, and dynamic markings.

Violino II musical score, measures 46-108. The score is written in treble clef with a key signature of one sharp (F#). The music features various dynamics and articulations.

Measures 46-51: *p* (piano), *f* (forte). The music consists of eighth and sixteenth notes, with a forte accent on measure 50.

Measures 52-57: *f* (forte). The music continues with eighth and sixteenth notes, ending with a half note rest.

Measures 58-64: *sf* (sforzando), *p* (piano). The music features a strong dynamic shift from *sf* to *p* in measure 58, followed by a series of eighth notes.

Measures 65-71: *p* (piano). The music continues with eighth and sixteenth notes, ending with a half note rest.

Measures 72-78: *p* (piano). The music features a series of eighth notes, with a half note rest in measure 76.

Measures 79-84: *p* (piano). The music continues with eighth and sixteenth notes, ending with a half note rest.

Measures 85-93: *p* (piano). The music features a series of eighth notes, with a half note rest in measure 91.

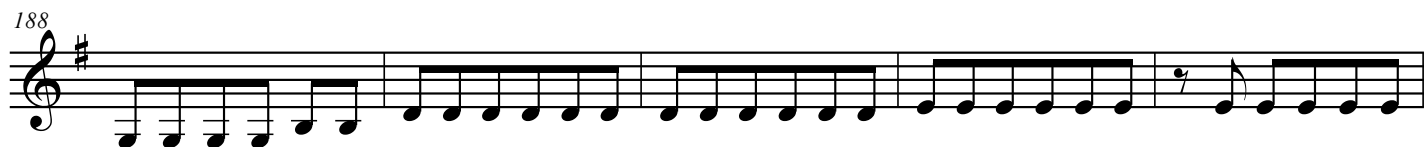
Measures 94-98: *p* (piano). The music continues with eighth and sixteenth notes, ending with a half note rest.

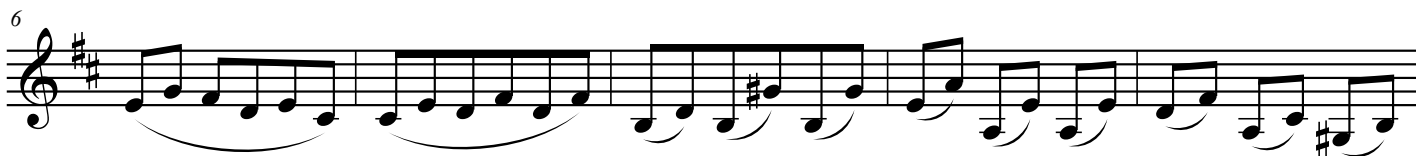
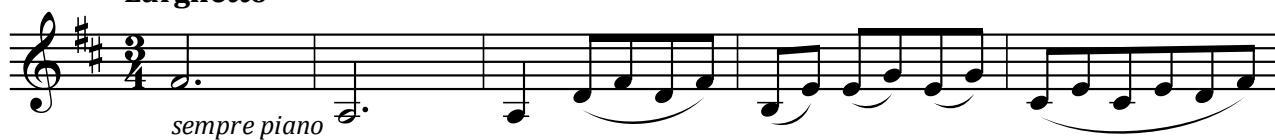
Measures 99-103: *p* (piano). The music features a series of eighth notes, with a half note rest in measure 101.

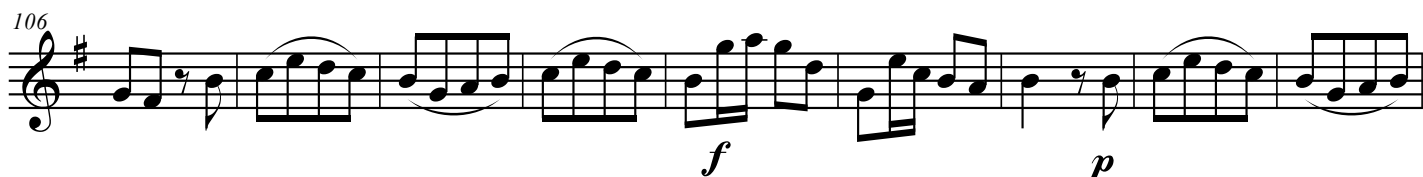
Measures 104-107: *p* (piano). The music continues with eighth and sixteenth notes, ending with a half note rest.

Measures 108-114: *p* (piano). The music features a series of eighth notes, with a half note rest in measure 112.





Larghetto**Rondó
Allegretto**



160 **3**

p

174

183 *p*

192 *f* *p* *f*

200 **20**

230 **4** *p*

241 **3** *p*

253 *f*

262 *p*

270

279 *f*

Detailed description: This page contains the musical score for Violino II, measures 160 through 279. The score is written in treble clef with a key signature of one sharp (F#). The time signature is 4/4. The music features a variety of rhythmic patterns, including eighth and sixteenth notes, and rests. Dynamic markings include *f* (forte), *p* (piano), and *f* (forte). There are several measures with repeat signs and first/second endings. The score is divided into systems of five staves each. The first system (measures 160-173) starts with a **3** (triple) and a *p* (piano) marking. The second system (measures 174-182) continues the melodic line. The third system (measures 183-191) features a *p* (piano) marking. The fourth system (measures 192-199) includes *f* (forte) and *p* (piano) markings. The fifth system (measures 200-229) starts with a **20** (20th measure) and includes a key change to two flats (Bb, Eb). The sixth system (measures 230-240) features a **4** (quadruple) and a *p* (piano) marking. The seventh system (measures 241-252) includes a **3** (triple) and a *p* (piano) marking. The eighth system (measures 253-261) features a *f* (forte) marking. The ninth system (measures 262-269) includes a *p* (piano) marking. The tenth system (measures 270-278) continues the melodic line. The eleventh system (measures 279-287) ends with a *f* (forte) marking and a final chord.