

Violin

1471 Trio for Violin, Cello and Organ

Stephen W. Beatty (1938)

$\text{♩} = 90$

Staff 1: *mp* *f* *mf*

Staff 2: *mp* *f* *mp* *mf* 3

Staff 3: *p* *f* *mf* 5

Staff 4: *mp* *mf* *f* *mf*

Staff 5: *f*

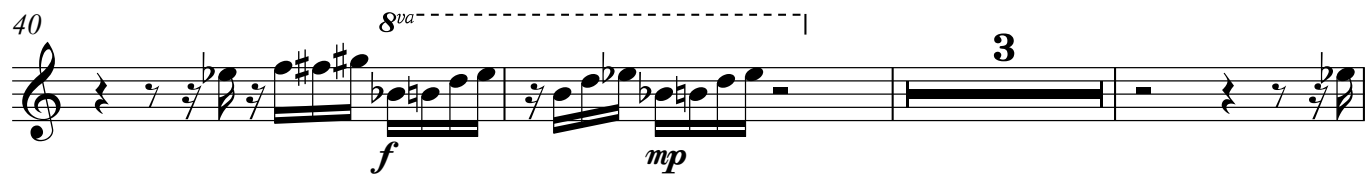
Staff 6: *mf* *p* *mf*

Staff 7: *f* *ff* *mf*

Staff 8: 2 *mp* 2

Violin

40 *8va*-----|



f *mp* **3**

46



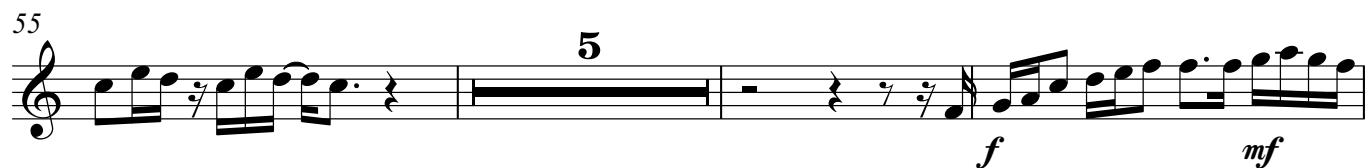
f *mf*

50 *8va*-----|



f *mf* **2**

55 **5**



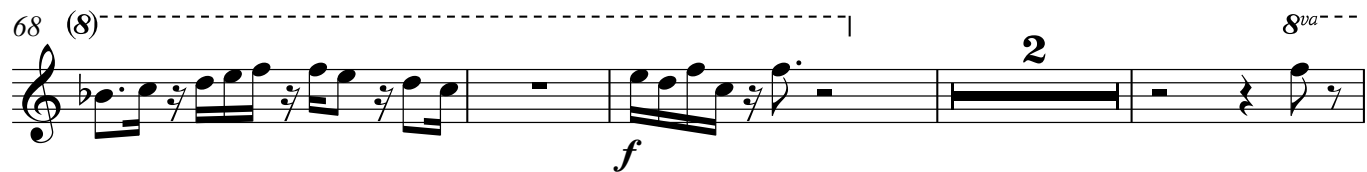
f *mf*

63 *8va*-----|



mp *mf* **2**

68 (8)-----| *8va*-----



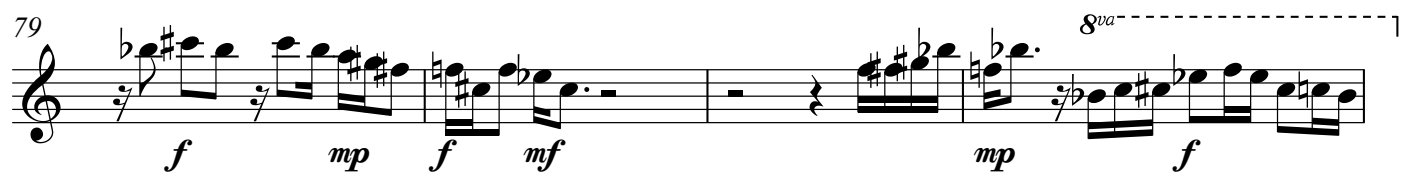
f **2**

74 (8)-----|



mf **2**

79 *8va*-----|



f *mp* *f* *mf* *mp* *f*

83

5

mf *f*

This staff contains measures 83 through 90. It begins with a treble clef and a key signature of one sharp (F#). Measure 83 starts with a quarter rest, followed by eighth notes G#4, A#4, and B4. Measure 84 has a whole rest. Measure 85 contains a five-measure rest. Measure 86 has a whole rest. Measure 87 begins with a sixteenth-note triplet (G4, A4, B4) marked *mf*, followed by a quarter note B4 marked *f*. Measure 88 has a quarter rest, and measure 89 has eighth notes G4 and A4. Measure 90 has eighth notes B4 and A4.

91

mf *p* *f* *p* *mf*

This staff contains measures 91 through 94. Measure 91 has eighth notes G4, A4, B4 marked *mf*, followed by a quarter rest. Measure 92 has eighth notes G4, A4 marked *p*, followed by a quarter rest. Measure 93 has a sixteenth-note triplet (G4, A4, B4) marked *f*, followed by a quarter note B4. Measure 94 has eighth notes G4, A4 marked *p*, followed by a quarter rest.

95

2

f *mp*

This staff contains measures 95 through 99. Measure 95 has a whole rest. Measure 96 contains a two-measure rest. Measure 97 has a whole rest. Measure 98 has eighth notes G4, A4 marked *f*, followed by a quarter rest. Measure 99 has eighth notes B4, A4 marked *mp*, followed by a quarter rest.

100

8va-----

4

f *pp* *mp* *mf* *f* *mf*

This staff contains measures 100 through 106. Measure 100 has a dashed line labeled 8va above it. Measures 100-101 have eighth notes G4, A4 marked *f*, followed by a quarter rest. Measure 102 has eighth notes B4, A4 marked *pp*, followed by a quarter rest. Measure 103 has eighth notes G4, A4 marked *mp*, followed by a quarter rest. Measure 104 has eighth notes B4, A4 marked *mf*, followed by a quarter rest. Measure 105 has eighth notes G4, A4 marked *f*, followed by a quarter rest. Measure 106 has eighth notes B4, A4 marked *mf*, followed by a quarter rest.

107

f *mf* *p* *mf*

This staff contains measures 107 through 110. Measure 107 has eighth notes G4, A4 marked *f*, followed by a quarter rest. Measure 108 has eighth notes B4, A4 marked *mf*, followed by a quarter rest. Measure 109 has eighth notes G4, A4 marked *p*, followed by a quarter rest. Measure 110 has eighth notes B4, A4 marked *mf*, followed by a quarter rest.

111

3

p *mf* *mp*

8va-----

This staff contains measures 111 through 117. Measure 111 contains a three-measure rest. Measure 112 has a whole rest. Measure 113 has eighth notes G4, A4 marked *p*, followed by a quarter rest. Measure 114 has eighth notes B4, A4 marked *mf*, followed by a quarter rest. Measure 115 has eighth notes G4, A4 marked *mp*, followed by a quarter rest. Measure 116 has a whole rest. Measure 117 has eighth notes B4, A4 marked *mp*, followed by a quarter rest.

118 (8)

mf *mp*

This staff contains measures 118 through 120. Measure 118 has eighth notes G4, A4 marked *mf*, followed by a quarter rest. Measure 119 has eighth notes B4, A4 marked *mf*, followed by a quarter rest. Measure 120 has eighth notes G4, A4 marked *mp*, followed by a quarter rest.

121 (8)

pp *p* *pp* *mp*

3

This staff contains measures 121 through 123. Measure 121 has eighth notes G4, A4 marked *pp*, followed by a quarter rest. Measure 122 has eighth notes B4, A4 marked *p*, followed by a quarter rest. Measure 123 has eighth notes G4, A4 marked *pp*, followed by a quarter rest.

Violin

126 *8va*

f *mf* *mp* *mf* *mp* *mf* **3**

132 *8va*

f *mp* *mf* *mp* *mf*

135 (8)

mp *pp* *mf*

139

p *f*

144 *8va*

mf *p* *f* *8va*

146 (8)

ppp *mf* *f*

Violoncello

1471 Trio for Violin, Cello and Organ

Stephen W. Beatty (1938)

$\text{♩} = 90$

2

mf *p* *mf*

6

pp *mf* *p* *mp* *mf*

10

mp *mf* *f* *mf* *f* *ff*

15

mf *f* *mf*

19

pp *f*

23

pp *mf*

25

f

2 3

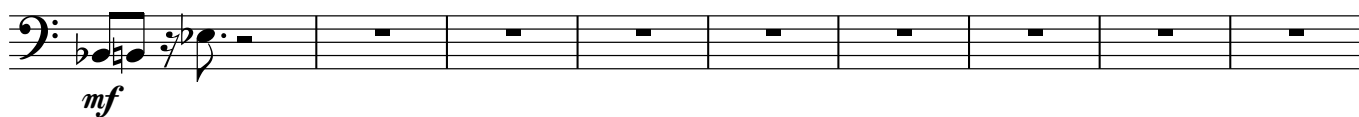
33



37



40



49



56



60



65



72



76



81



85



89



93



97



103



108



112



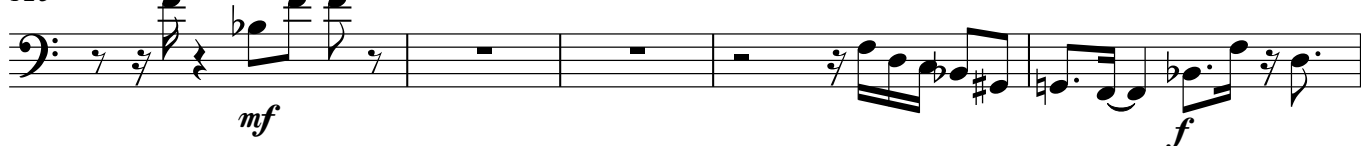
116



121



125



130



134



140



144

