

Te Deum Brasil (alternado)

Op. 65

Arranjo de Justino da Conceição

Allegro

01

7

13

p

cresc.

f

20

Allegro

02

24

f

12

p *cresc.*

41

f

Allegro

03

46

f

9

p *cresc.*

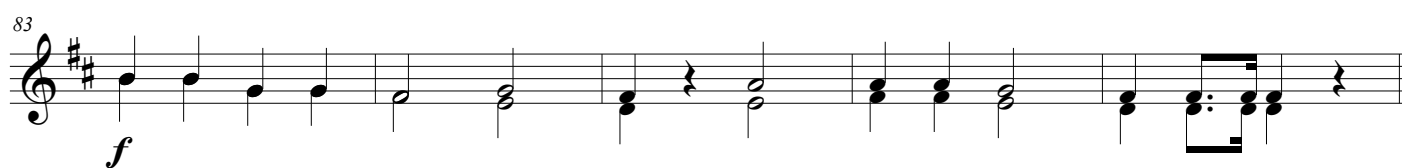
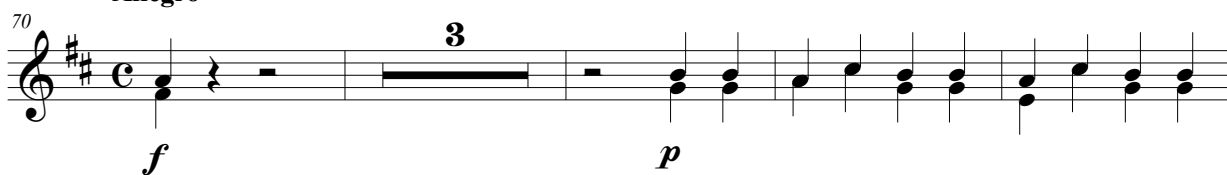
59

f

65

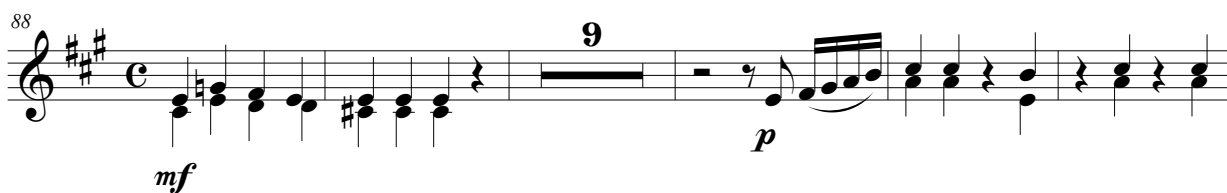
Allegro

04



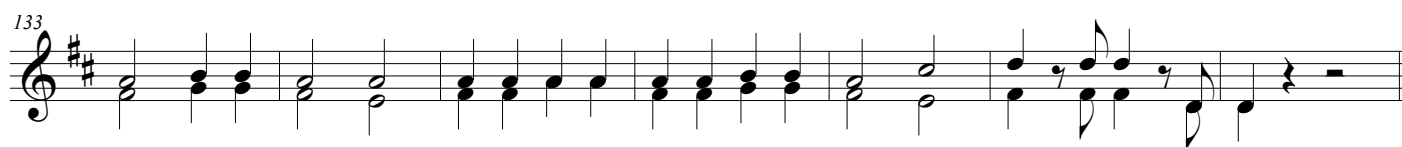
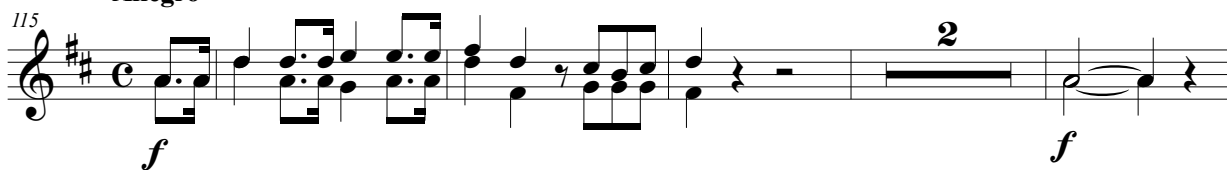
Andante religioso

05



Allegro

06



Allegro moderato

07

140

p

146

cresc. *f* *p*

152

cresc. *f*

Allegro

08

159

f

165

f

170

f

174

mf

181

cresc. *f*

Andante levado

09

189

mf

194

p

207

cresc. *f*

Allegro

10

215

mf *p*

221

227

mf

Sostenuto

232

p *dolce*

243

p

252

11 **Allegro**

257

mf *f* *mf* *f*

265

271

12 **Allegro**

278

f

288

298

308

p

317

f

13 **Andante**

328 **10**

p *p*

344 **13**

f

14 **Andante**

363 **4**

p *cresc.* *dim.*

Brilhante

373 *f* *p* *cresc.*

378 *f* *p*

382 *cresc.*

385 *f*

388 *p*

The image displays a musical score for a piece titled 'Te Deum Brasil (alternado)'. It consists of eight staves of music, each beginning with a measure number. The first staff (13) is marked 'Andante' and features a treble clef, a key signature of one sharp (F#), and a 6/8 time signature. It contains two measures of music, both marked 'p' (piano). The second staff (14) continues the piece, marked 'Andante', with a treble clef, a key signature of one sharp, and a 6/8 time signature. It contains two measures of music, marked 'p' and 'cresc.' (crescendo), followed by a measure marked 'dim.' (diminuendo). The third staff (14) is marked 'Brilhante' and features a treble clef, a key signature of one sharp, and a common time signature (C). It contains two measures of music, marked 'f' (forte) and 'p' (piano), followed by a measure marked 'cresc.' (crescendo). The fourth staff (14) continues the 'Brilhante' section, marked 'f' and 'p'. The fifth staff (14) continues the 'Brilhante' section, marked 'f' and 'p'. The sixth staff (14) continues the 'Brilhante' section, marked 'cresc.' and 'f'. The seventh staff (14) continues the 'Brilhante' section, marked 'f'. The eighth staff (14) continues the 'Brilhante' section, marked 'p'. The score includes various musical notations such as notes, rests, and dynamic markings.

