

# MusanKo

Musik anonymer KomponistInnen

Konzert

G-Dur

für Traversflöte,  
2 Violinen und Basso continuo

(S-L Saml.Engelhart 262)

Partitur und Stimmen

Edition MusanKo

## **Edition MusanKo – Musik anonymer KomponistInnen**

Ziel dieser Edition ist es, das in frei zugänglichen Quellen vorliegende, historische Notenmaterial anonymer KomponistInnen in eine für heutige MusikerInnen leichter lesbare Form zu überführen. Dazu werden z. B.

- Einzelstimmen spartiert,
- offensichtliche Fehler stillschweigend korrigiert,
- ausschließlich moderne Notenschlüssel verwendet,
- Artikulations- und Verzierungsangaben behutsam aus analogen Stellen übernommen,
- Generalbass-Bezifferungen ergänzt.

### **Konzert G-Dur für Traversflöte, 2 Violinen und Basso continuo**

herausgegeben von Harald Schäfer,

gesetzt mit Lilypond/Frescobaldi,

Edition MusanKo, 2023

Version: 13.10.2022

<http://www.musanko.de>

### **Quelle**

S-L Saml.Engelhart 262 (aus der Universitätsbibliothek, Lund)

Bibliographischer Nachweis: <https://opac.rism.info/search?id=190001730>

### **Satzbezeichnungen**

Allegro / Adagio / Allegro

### **Kontakt**

Anregungen, Fragen, Kritik und Wünsche bitte jederzeit per Mail an schafha <at> web.de

### **Rechtlicher Hinweis**

Alle mit der Editions Vorlage dieser Ausgabe verbundenen Rechte liegen beim Eigentümer der Quelle. Das in der Edition MusanKo bereitgestellte Notenmaterial steht unter der Creative-Commons-Lizenz CC BY-SA 4.0 (<https://creativecommons.org>).

# Konzert G-Dur

für Traversflöte, 2 Violinen und Basso continuo

Anonymus, S-L Saml.Engelhart 262

**Allegro**

Traversflöte

[Tutti]

Violine 1

Violine 2

B. c.

5 3 6 4 5 3 7 4 2 8 3 5 3 6 4 5 3 7 4 2 8 3 6 6

7 5 6 5 3 6 4 5 3 7 4 2 6 4 5 3 7 4 2

13 8 3 6 9 6 6 5 6 7 6 5 9 6 6 5 6 7 6 5 9 6 6 5 6

19 7 3 6 5 9 6 6 5 6 7 3 6 5 9 7 4 2 6 6 6 6 7

25

Solo

6 6 6 6

31

tr tr

37

tr

43

tr

49

System 49: Four staves (Flute, Violin I, Violin II, Bass). The Flute part has a continuous eighth-note melody. The Violin I and II parts have rests with occasional eighth notes. The Bass part has a low, sustained line with some eighth notes. Fingering numbers 6 are indicated below the Bass staff. A piano (*p*) dynamic marking is present.

54

System 54: Four staves. The Flute part continues its melody. The Violin I and II parts have rests. The Bass part has a low, sustained line. Fingering numbers 6, #, 6, 4, #4, 2, 6, 6, #, 5, 6, 5, #7, 8, 3, 5, 6, 5, #7, 2 are indicated below the Bass staff. A forte (*f*) dynamic marking is present.

60

System 60: Four staves. The Flute part has a melody. The Violin I and II parts have a melody. The Bass part has a low, sustained line. Fingering numbers 8, 6, 6, 6, 7, 6, 5, 4, #3 are indicated below the Bass staff. A piano (*p*) dynamic marking is present.

66

System 66: Four staves. The Flute part has a melody. The Violin I and II parts have a melody. The Bass part has a low, sustained line. A trill (*tr*) marking is present above the Flute staff.

71

71

72

73

74

75

76

*f*

*f*

6 6 6

6 7 5

77

77

78

79

80

81

82

*p*

*p*

6 6 6

6 6 6

83

83

84

85

86

87

88

*p*

6

89

89

90

91

92

93

94

*tr*

94 *tr* *tr* [Tutti] *f* *f* *f*

5 3 6 4 5 3 7 4 2

100

8 3 6 6 5 6 5 3 6 4 5 3 7 4 2

106

8 3 6 6 6 9 6 6 6 7 5 9 6 6 6

112

7 7 7 6 6 6 6 7 6 6

## Adagio

6  
4  
2

6  
5

7  
#3

#

4

6

6

6

7 6

7 7 6 5

9

6  
5

7  
#3

6 4

5 3



## Allegro

[Tutti]

6/4 5/3 6/4 7/4 8/2 6/4 5/3

6/4 5/3 6/4 5/3 6/5 # 7/3

Solo

6/4 6 6/4 5/3

6/4 5/3 6

40

Sheet music for 'The Rose Tree' in G major, 2/4 time. The score consists of four staves: Treble 1, Treble 2, Treble 3, and Bass. The key signature has one sharp (F#). The piece begins at measure 40. The melody is primarily in the Treble 1 and Treble 2 staves. The Treble 3 staff provides harmonic support with chords and single notes. The Bass staff provides a simple bass line. Dynamics include *p* (piano) and *f* (forte). The piece ends with a final chord in the Treble 3 staff and a bass line in the Bass staff.

47

6 7 #3

b6 6 —

b5 —

6 6

*p*

*p*

3

54

System 54-61: Four staves (Flute, Violin I, Violin II, Bass). The key signature is G major (one sharp). The time signature is 4/2. The system contains measures 54 through 61. Measure 54 has a trill (tr) on the first staff. Measures 55 and 56 have triplets (3) on the first staff. Measures 57 and 58 have triplets (3) on the first staff. Measures 59 and 60 have triplets (3) on the first staff. Measure 61 has a trill (tr) on the first staff. The bass staff has rests in measures 54-58 and a whole note in measure 59, followed by eighth notes in measures 60 and 61.

62

System 62-68: Four staves. Measures 62 through 68. Measures 62-68 have triplets (3) on the first staff. Measures 62-68 have eighth notes on the second staff. Measures 62-68 have eighth notes on the third staff. Measures 62-68 have eighth notes on the fourth staff. The time signature changes from 4/2 to 6/8 in measure 63. The system contains measures 62 through 68. The bass staff has rests in measures 62-64 and eighth notes in measures 65-68.

69

[Tutti]

System 69-76: Four staves. Measures 69 through 76. Measures 69-76 have a trill (tr) on the first staff. Measures 69-76 have a forte (f) dynamic on the second staff. Measures 69-76 have a piano (p) dynamic on the third staff. Measures 69-76 have a forte (f) dynamic on the fourth staff. The system contains measures 69 through 76. The time signature is 6/8. The bass staff has eighth notes in measures 69-76.

77

System 77-84: Four staves. Measures 77 through 84. Measures 77-84 have a forte (f) dynamic on the first staff. Measures 77-84 have a forte (f) dynamic on the second staff. Measures 77-84 have a forte (f) dynamic on the third staff. Measures 77-84 have a forte (f) dynamic on the fourth staff. The system contains measures 77 through 84. The time signature is 6/8. The bass staff has eighth notes in measures 77-84.

# Konzert G-Dur

für Traversflöte, 2 Violinen und Basso continuo

## Traversflöte

Anonymus, S-L Saml.Engelhart 262

**Allegro**

[Tutti]

7

13

19

25 Solo

31

38

43

49

54

66 *tr*

72 9 *tr*

87

92 *tr*

98 [Tutti] *f*

104

110

**Adagio**

4

6 *tr*

9 *tr*

**Allegro**

Musical score for "The Rose Tree" in G major, 3/8 time. The score is for a single melodic line, likely for a flute or violin. It consists of nine staves of music. The key signature has one sharp (F#). The time signature is 3/8. The score includes various musical notations such as eighth notes, sixteenth notes, triplets, and rests. Dynamics include [Tutti], *p* (piano), *f* (forte), and Solo. The piece ends with a double bar line and repeat dots.

# Konzert G-Dur

für Traversflöte, 2 Violinen und Basso continuo

## Violine 1

Anonymus, S-L Saml.Engelhart 262

**Allegro**

9

17

25

34

43

52

63

71

78

86

95

*p*

*f*

*p*

*f*

*p*

*f*

*f*

**Adagio****Allegro**



# Konzert G-Dur

für Traversflöte, 2 Violinen und Basso continuo

## Violine 2

Anonymus, S-L Saml.Engelhart 262

**Allegro**

8

16

24

34

43

52

63

71

78

86

94

*p*

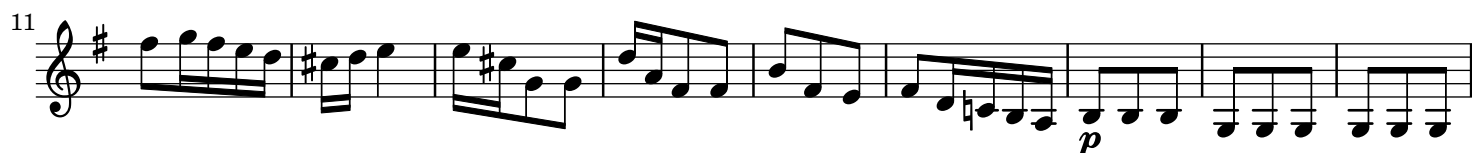
*f*

*p*

*f*

*p*

*f*

**Adagio****Allegro**



## Adagio

5

8

## Allegro

15

33

47

67

77