

MUSIC AT NIGHTFALL,
Duett.



"What has Earth dearer,
 "In palace or grove,
 "Than music at nightfall,
 "From lips that we love."

WRITTEN BY
C. J. JEFFREYS ESQ.
 THE MUSIC BY
S. NELSON.

Thayer & Co. Lith. Boston.

Price, 75 cts.

NEW-YORK.

Published by **FIRTH & HALL** 239 Broadway, and **FIRTH & HALL** 2 Franklin Square.

Entered according to Act of Congress in the year 1845 by James L. Hewitt, in the clerk's office of the District Court of the southern District of N.Y.



MUSIC AT NIGHTFALL.

DUETT.

Words by C.J. Jefferys.

The Music by S. Nelson.

FIRST VOICE.

POCO ALLEGRETTO — Delicatezza.

SECOND VOICE.

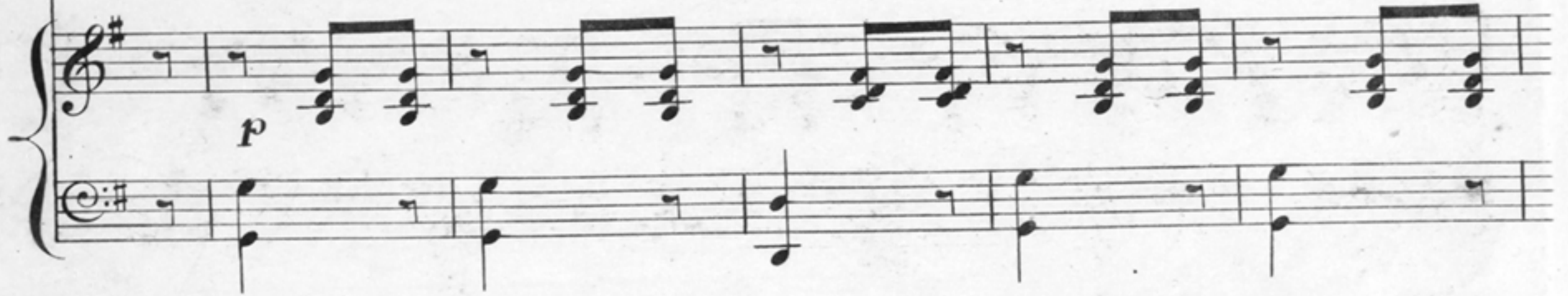
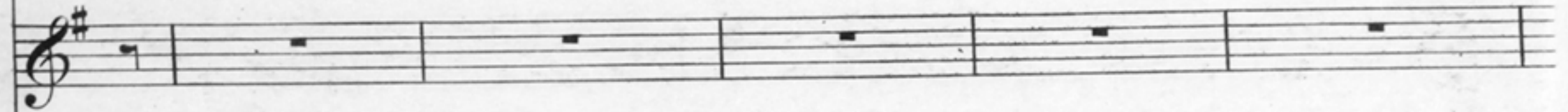
PIANO

FORTE.

multiturns

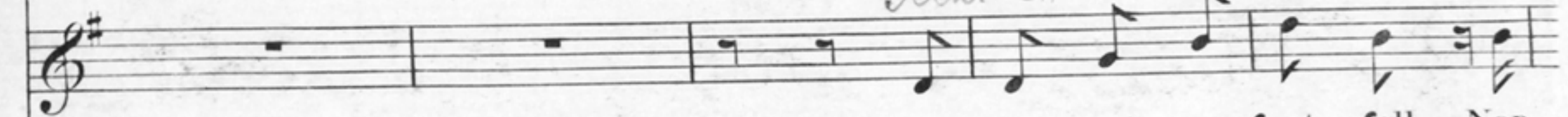


I hear not a foot--fall, There is not a tone; O! greet thou mine

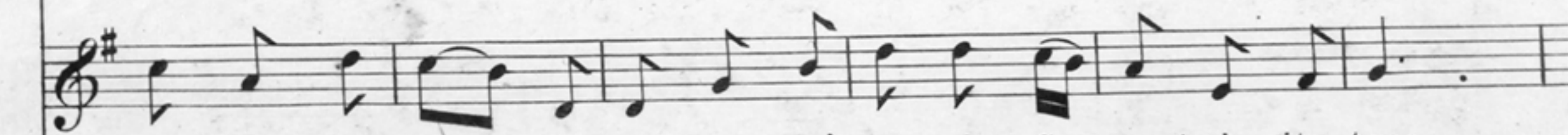


ear, With a song of thine own!

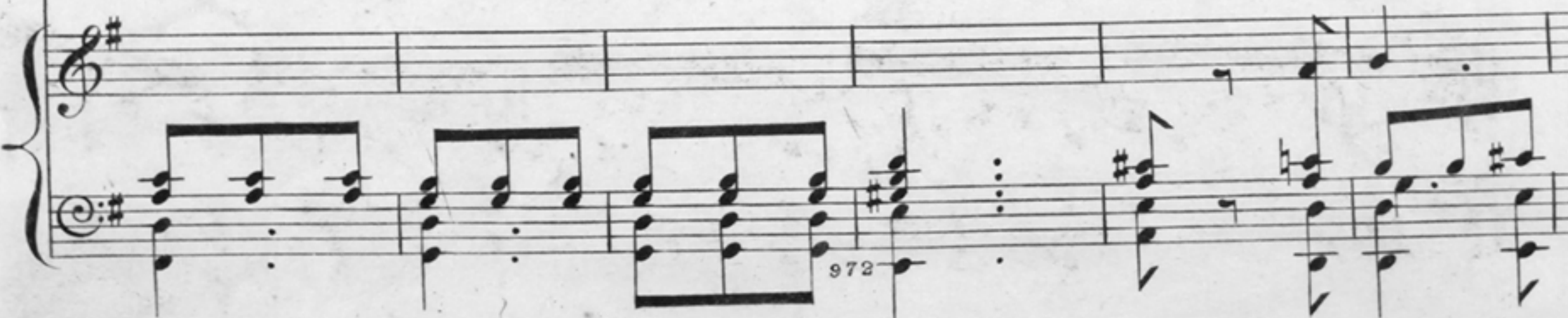
Mrs. Stonebrink



There is not a foot--fall, Nor



voice save thine own, But ne--ver seem'd mu--sic So sweet in its tone.



Pour thy dear me--lo--dy Light--ly a--long;

Love wakes the lay And my

a Tempo.

a Piacere. What has Earth dear--er, In pa--lace or

a Tempo. heart's in the song: What has Earth dear--er, In pa--lace or

Colla voce. *a Tempo.*

grove, Than mu--sic at night--fall, From lips that we love.

grove, Than mu--sic at night--fall, From lips that we love.

Cres.

Mu...sic, at night...fall, Mu...sic, at

Mu...sic, at night...fall, Mu...sic, at

This system contains the first two vocal staves and the first two staves of the piano accompaniment. The vocal lines are in treble clef with a key signature of one sharp (F#). The piano accompaniment is in grand staff (treble and bass clefs). The lyrics are: "Mu...sic, at night...fall, Mu...sic, at" on the first line and "Mu...sic, at night...fall, Mu...sic, at" on the second line.

night...fall, From lips that we love.

night...fall, From lips that we love.

Adagio.

Adagio.

Adagio.

mf a Tempo.

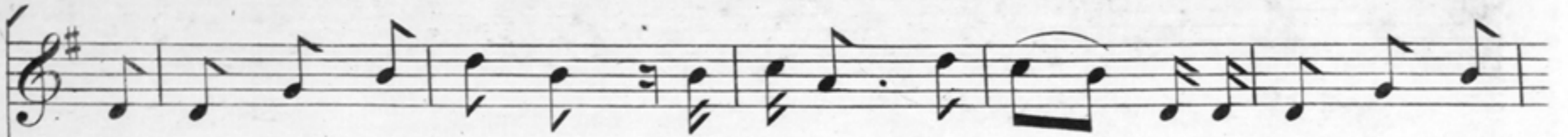
This system contains the second two vocal staves and the next two staves of the piano accompaniment. The vocal lines continue with the lyrics: "night...fall, From lips that we love." on the third line and "night...fall, From lips that we love." on the fourth line. The tempo marking "Adagio." appears above the first vocal staff, above the second vocal staff, and above the first piano staff. The dynamic marking "*mf* a Tempo." appears above the second piano staff.

Cres.

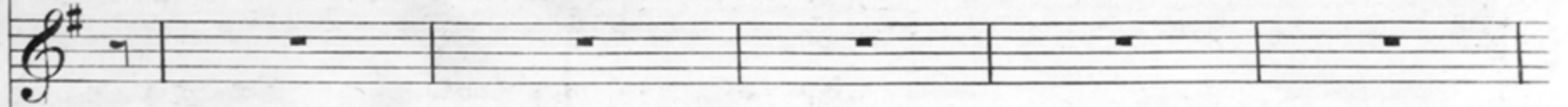
ff

This system contains the final two staves of the piano accompaniment. The first staff of this system is empty. The second staff of this system is empty. The third and fourth staves of this system contain the piano accompaniment. The dynamic marking "*Cres.*" is placed above the third staff, and "*ff*" is placed above the fourth staff.

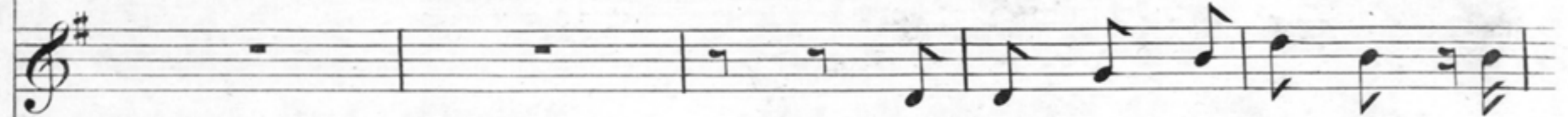
SECOND VERSE.



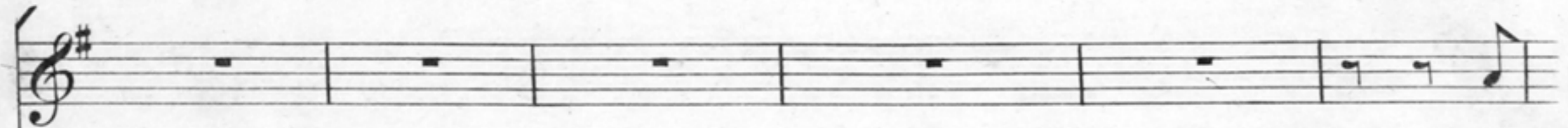
The song that hath cheer'd me Shall ne--ver de--part; Tho' it pass from the



ear, It will dwell in the heart.



In sun--shine or sad--ness, In



To



good or in ill, The heart thou hast welcom'd, Shall beat for thee still.



list to thy mu--sic, I'd leave the gay throng;

Love wakes the

ad lib. lay, And my heart's in the song. *a Tempo.* What has Earth dear--er, In

Colla voce. *P* *a Tempo.* pa--lace or grove, Than mu--sic at night--fall, From lips that we

pa--lace or grove, Than mu--sic at night--fall, From lips that we

Waltz

love. Mu--sic at night--fall, Mu--sic at

love. Mu--sic at night--fall Mu--sic at

night--fall, From lips that we love.

night--fall, From lips that we love.

Adagio.

mf a Tempo.

Cres.