

MusanKo

Musik anonymer KomponistInnen

Concerto [Suite]

C-Dur

für Oboe, 2 Violinen
und Basso continuo

(S-L Saml.Engelhart 430)

Partitur und Stimmen

Edition MusanKo

Edition MusanKo – Musik anonymer KomponistInnen

Ziel dieser Edition ist es, das in frei zugänglichen Quellen vorliegende, historische Notenmaterial anonymer KomponistInnen in eine für heutige MusikerInnen leichter lesbare Form zu überführen. Dazu werden z. B.

- Einzelstimmen spartiert,
- offensichtliche Fehler stillschweigend korrigiert,
- ausschließlich moderne Notenschlüssel verwendet,
- Artikulations- und Verzierungsangaben behutsam aus analogen Stellen übernommen,
- Generalbass-Bezifferungen ergänzt.

Concerto [Suite] C-Dur für Oboe, 2 Violinen und Basso continuo

herausgegeben von Harald Schäfer,

gesetzt mit Lilypond/Frescobaldi,

Edition MusanKo, 2024

Version: 26.01.2024

<http://www.musanko.de>

Quelle

S-L Saml.Engelhart 430 (aus der Universitätsbibliothek, Lund)

Bibliographischer Nachweis: <https://opac.rism.info/search?id=190001682>

Satzbezeichnungen

[Allegro] / Menuet alternat. / Menuet / Echo / Giga / Gavote

Kontakt

Anregungen, Fragen, Kritik und Wünsche bitte jederzeit per Mail an schafha <at> web.de

Rechtlicher Hinweis

Alle mit der Editionsvorlage dieser Ausgabe verbundenen Rechte liegen beim Eigentümer der Quelle. Das in der Edition MusanKo bereitgestellte Notenmaterial steht unter der Creative-Commons-Lizenz CC BY-SA 4.0 (<https://creativecommons.org>).

Concerto [Suite] C-Dur

für Oboe, 2 Violinen und B. c.

Anonymus, S-L Saml.Engelhart 430

[Allegro]

Oboe

Violine 1

Violine 2

B. c.

tasto— tasto— tasto—

4

6 6 6 6 tasto— tasto— tasto

7

[Solo]

[Ob solo]

6 6

10

6 6 6 6_{b5} 6

13

6 6 6 6 6 6 6 5 3

6/5

16

6 6 6 6 6 6 6 5 3

6/5

19

[Tutti]

tasto

6 6 6 6 6 6 6 5 3

6/5

22

[Tutti]

6 6 6 6 6 6 6 5 3

6/5

25 [Solo]

6 6 4 #3 6 6/5 6 #

28 *tr*

6 6/4/3 6 6/4/3 6/5 6 # # 6 7/3 6 6/5 6 6/4/3 5

31

6 6 #5/3 6 #5/4 #5/3 6/5 7/3

34

6/5 7 6/4/3 6 7/3 6 6 6 # 6

37

6 6 6 5 4 #3 6 6 7 #3

40

6 6 6 5 4 #3 6 #5 #3 6 6 #5 6 6 5 #5 #3 [Tutti]

43

6 6 6 5 4 #3 6 5 #5 #3 6 7 6 6 6 5 #5 #3

46

#

48

System 48: Four staves (Violin I, Violin II, Viola, and Cello/Double Bass). The first staff has a whole rest. The second staff has a quarter rest followed by eighth notes. The third staff has eighth notes. The fourth staff has eighth notes. Fingering numbers 6, 6, 7, 6, 6, 7, 6, 5, 3 are written below the fourth staff.

51

System 51: Four staves. The first staff has eighth notes. The second staff has a quarter rest followed by eighth notes. The third staff has eighth notes. The fourth staff has eighth notes. A fingering number 6 is written below the fourth staff.

53

[Tutti]

System 53: Four staves. The first staff has a quarter rest followed by eighth notes. The second staff has eighth notes. The third staff has eighth notes. The fourth staff has eighth notes. Fingering numbers 6, 6, 6 are written below the fourth staff.

55

[Solo]

[Ob solo]

[Ob solo]

System 55: Four staves. The first staff has eighth notes and a trill. The second staff has eighth notes. The third staff has eighth notes. The fourth staff has eighth notes. Fingering numbers 6, 6, 6, 5, 6, 4, 5, 3 are written below the fourth staff.

58

Ob solo

6 6 6 6

A musical score for the song "The Rose Tree". The score is written for four staves: three treble clefs and one bass clef. The first staff has a treble clef and a key signature of one flat (B-flat). The second and third staves have treble clefs and a key signature of one flat (B-flat). The fourth staff has a bass clef and a key signature of one flat (B-flat). The score is divided into three measures. The first measure contains a melody in the first staff, a whole rest in the second and third staves, and a bass line in the fourth staff. The second measure contains a melody in the first staff, a whole rest in the second and third staves, and a bass line in the fourth staff. The third measure contains a melody in the first staff, a whole rest in the second and third staves, and a bass line in the fourth staff. The score is marked with a 64 at the beginning of the first staff. The lyrics "The Rose Tree" are written below the first staff.

67

Musical score for 'The Rose Tree' (Meisterlied). The score is written for four staves: Treble 1, Treble 2, Treble 3, and Bass. The key signature is one sharp (F#). The melody is primarily in the Treble 1 staff, with some parts in the Bass staff. The Treble 2 and Treble 3 staves contain rests. The Bass staff has a line of sixteenth notes. The score is divided into three measures by vertical bar lines. The first measure contains a treble staff with a melody and a bass staff with a line of sixteenth notes. The second measure contains a treble staff with a melody and a bass staff with a line of sixteenth notes. The third measure contains a treble staff with a melody and a bass staff with a line of sixteenth notes. The score ends with a double bar line.

70

6 6 7 # 6 7 # 7 4 #3 6 6 7 #

73

6 7 # 7 4 #3 $\frac{6}{5}$ # $\frac{6}{5}$ # 6 $\frac{6}{5}$

76

[Tutti]

6 6 $\frac{6}{4}$ $\frac{5}{3}$ 6 6 $\frac{6}{5}$ 6 6 $\frac{5}{5}$

79

6 6 $\frac{6}{5}$ 6 6 6 6 6

82

Fin. Fin. Fin. Fin.

6 6 6 $\frac{6}{4}$ $\frac{5}{3}$

85 **Adagio**

6 6 7 7 6 7 7 7 7

88

7 6 7 6 7 6 5 $\frac{\#4}{2}$ 6 4 $\#3$ 6

91 **Da Capo**

$\frac{\#4}{2}$ 6 4 $\#3$ 6 $\frac{6}{4}$ $\frac{6}{4}$ 5

Da Capo Da Capo Da Capo Da Capo

Menuet alternat.

Measures 1-6 of the Minuet in A major. The score is in 3/4 time. The first system contains measures 1 through 6. The bass line has a fingering '6' under measure 6.

Measures 7-12 of the Minuet in A major. The score continues with measures 7 through 12. The bass line has fingerings '6', '6', '6', '7', '6', and '5 3' under measures 7 through 12 respectively. Trills are marked in measures 10 and 11.

Measures 13-18 of the Minuet in A major. The score continues with measures 13 through 18. The bass line has fingerings '6', '#', 'b', '#', and '6' under measures 13 through 17 respectively. A repeat sign is at the end of measure 18.

Measures 19-24 of the Minuet in A major. The score continues with measures 19 through 24. The bass line has fingerings 'b', '4', '#3', '6', '6', and a blank space under measures 19 through 24 respectively.

25

6 6

31

6 6 6 6 4 3

Menuet

6 6 6 6 6 6 6 6

9

6 6 6 6 6 6 6 6

17

5 3 #4 2 6 6 # #4 2 6 7 # 6 # 6 #

25

6 6 6 6 6 6 5

Echo

7 6 6 6

9

7 6 6 5 4 3 6 6 6 6 6 5 3 6

19

6 6 7
5 #3

6 6 5
4 #3

6 6 6 6 5
4 #3

#

28

6 6 5 6 4 #3 4 #3 6 6 6 6 # 6 4 5
5

37

6 6 6 6 # 6 5 6 6 6 #5 #3 6 6 6 #5 #3
4 5 3

46

6 # 6 # 6 # 6 # 6 # 6 6 6 7 #3 6
5

56

6 5 6 6 5 4 #3 6 6 5 6 6 5 4 #3 6 5 6 5 6 5 6

65

6 5 6 4 5 3 6 6 4 6 5 7 6 4 5 3

Giga

6 6 6 4 3

5

6 6 4 4 2 6 6 7 6 4 5 3

(8)

6 6 6 4 3 #

12

6 4 5 3 6 6 6 4 5 3 6 # 5 3 6 6 # 5 3

17

6 7 # 5 3 7 # 5 3 6 # 3 # 5 3 6 # 5 3

21

5 3 # 5 3 6 # 5 3 6 4 # 5 3

25

System 25: Four staves. The top staff (treble clef) contains a continuous eighth-note triplet pattern. The second and third staves (treble clef) are empty. The bottom staff (bass clef) contains a sequence of notes with fingerings: 6, 5, #3, 7, 6, 5, 7, 6, 5, #7.

28

System 28: Four staves. The top staff (treble clef) contains a continuous eighth-note triplet pattern. The second and third staves (treble clef) are empty. The bottom staff (bass clef) contains a sequence of notes with fingerings: #5, 6, 5, #3, #, #, 6, #, 6, 6.

32

System 32: Four staves. The top staff (treble clef) contains a sequence of notes with fingerings: 6, 4, #3, 6, 6, 6, 4, 4/2, 6. The second and third staves (treble clef) contain eighth-note triplet patterns. The bottom staff (bass clef) contains a sequence of notes with fingerings: 6, 4, #3, 6, 6, 6, 4, 4/2, 6.

37

System 37: Four staves. The top staff (treble clef) contains a sequence of notes with fingerings: 6, 5, 7, 6, 5, 7, 4, 3. The second and third staves (treble clef) contain eighth-note triplet patterns. The bottom staff (bass clef) contains a sequence of notes with fingerings: 6, 5, 7, 6, 5, 7, 4, 3.

Gavote

6 6 6 5 4 3 7 6 6 6 6 5 4 3 5 6 6 5

Fin. Fin. Fin. Fin.

6 6 6 5 4 3 7 # — 6 6 6

Fin. Fin. Fin. Fin.

6 5 4 3 6 3 7 6 7 6 4 3 6 6 3 5 3 6 5 3 6 3 6 6 5 4 3

Fin. Fin. Fin. Fin.

6 5 7 3 # — 6 5 7 3 # 6 — 6 5 3 6 6 3 6 5 4 3

Da Capo Da Capo Da Capo Da Capo

Concerto [Suite] C-Dur

für Oboe, 2 Violinen und B. c.

Oboe

Anonymus, S-L Saml.Engelhart 430

[Allegro]

7

[Solo]

10

12

14

17

24

[Tutti]

[Solo]

27

30

34

37

40

10

53

[Tutti]

56 [Solo]

59

62 [Solo]

65

67

69

72

75 [Tutti]

79

82 *tr* Fin.

85 Adagio

89 Da Capo

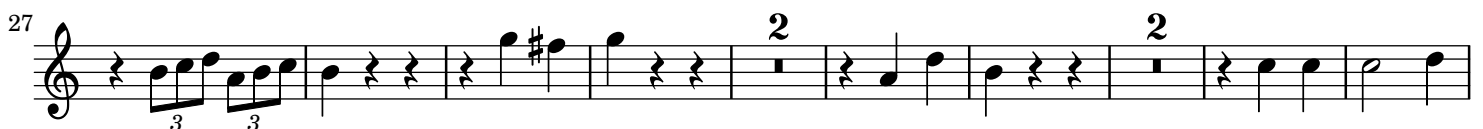
Menuet alternat.

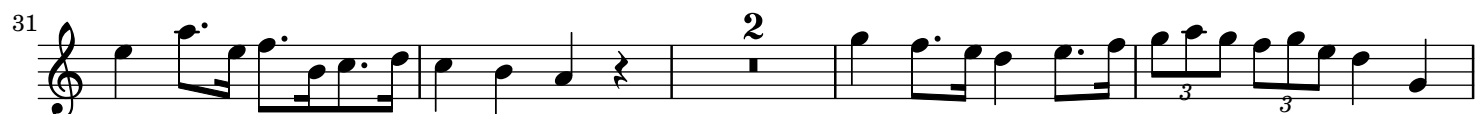


Menuet



Echo



**Giga**

Gavote

Musical score for Oboe, Gavote. The score is written in treble clef with a key signature of one sharp (F#) and a common time signature (C). The piece consists of 23 measures, divided into four staves. The first staff contains measures 1-8, the second staff contains measures 9-14, the third staff contains measures 15-22, and the fourth staff contains measures 23-24. The piece ends with a double bar line and a repeat sign. The title "Gavote" is written above the first staff. The word "Fin." is written above the final measure of the first staff. The word "Da Capo" is written above the final measure of the fourth staff. The measure numbers (8), 15, and 23 are written to the left of their respective staves. Trills (tr) are marked above measures 2, 8, and 9. The score includes various musical notations such as eighth notes, quarter notes, half notes, and trills.

(8)

15

23

Fin.

Da Capo

Concerto [Suite] C-Dur

für Oboe, 2 Violinen und B. c.

Violine 1

Anonymus, S-L Saml.Engelhart 430

[Allegro]

4

7

10

20

23

26

15

44

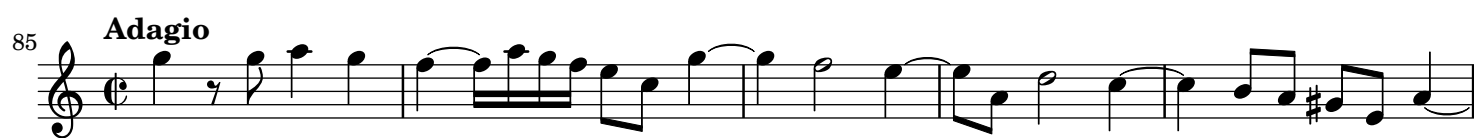
47

50

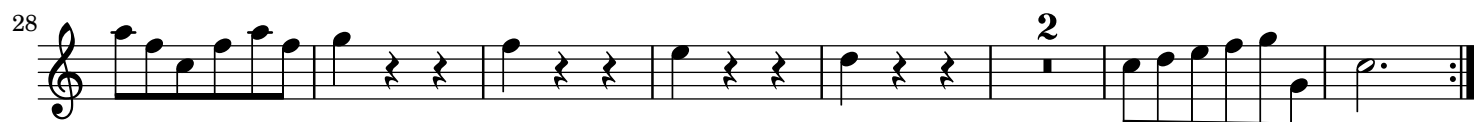
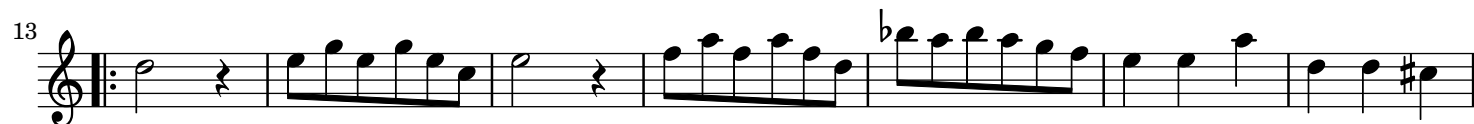
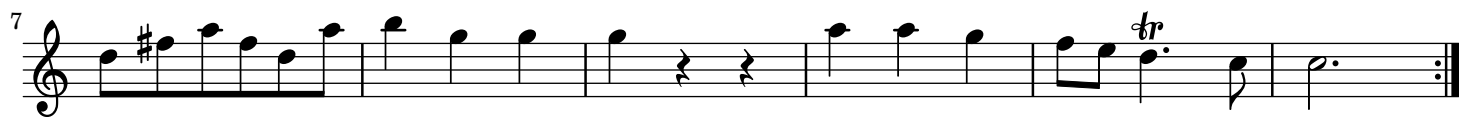
53

56

[Ob solo]



Menuet alternat.



Menuet

9

17

22

28

Echo

10

21

32

44

56

Giga

Musical score for Giga, Violine 1. The score consists of six staves of music. The first staff starts with a treble clef and a common time signature. It features a series of eighth notes with triplets, followed by a measure with a '4' above it. The subsequent staves continue the melody with various triplet patterns and rests. The piece ends with a double bar line and repeat dots.

Gavote

Musical score for Gavote, Violine 1. The score consists of four staves of music. The first staff starts with a treble clef and a common time signature. It features a series of eighth notes with trills, followed by a measure with a '2' above it. The subsequent staves continue the melody with various eighth and sixteenth note patterns. The piece ends with a double bar line and repeat dots, labeled 'Fin.'.

Da Capo

Concerto [Suite] C-Dur

für Oboe, 2 Violinen und B. c.

Violine 2

Anonymus, S-L Saml.Engelhart 430

[Allegro]

5

10

19

23

15

42

46

50

54

[Ob solo]

58

2

[VI 1 solo]

12

76

81

Fin. Adagio

87

Da Capo

Menuet alternat.

Measures 1-24 of the Minuet in A major. The piece is in 3/4 time. Measures 1-6 are the first strain, measures 7-12 the second, and measures 13-24 the third. Measure 24 ends with a double bar line and repeat dots.

Menuet

Measures 1-25 of the Minuet in A major. Measures 1-8 are the first strain, measures 9-16 the second, and measures 17-25 the third. Measure 25 ends with a double bar line and repeat dots.

Echo

Measures 1-33 of the Echo section. Measures 1-9 are the first strain, measures 10-21 the second, and measures 22-33 the third. Measure 33 ends with a double bar line and repeat dots.

[illegible][illegible]

Giga

(8)



Exercise 8 is a single staff in treble clef, starting with a repeat sign. The melody consists of eighth and sixteenth notes with triplet markings over several measures.

12

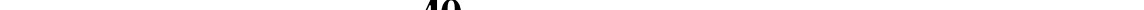
3

3

3

3

[illegible]

22 

35 

Gavote

Fin.

(8)

Musical notation for exercise 8, featuring a treble clef, a repeat sign, and a sequence of notes with a fermata and a second ending bracket.

[illegible][illegible]

Concerto [Suite] C-Dur

für Oboe, 2 Violinen und B. c.

Basso continuo

Anonymus, S-L Saml.Engelhart 430

[Allegro]

Musical score for the bassoon part of "The Marriage of Figaro" by Wolfgang Amadeus Mozart. The score is in bass clef, 2/4 time, and features various musical notations including notes, rests, and fingerings. It includes performance instructions such as "tasto", "[Ob solo]", and "[Tutti]". The score is divided into measures, with measure numbers 5, 9, 14, 19, 24, 29, 34, and 39 indicated. The key signature is one flat (B-flat).

44

6 5 6 7 6 6 6 5 5 # — # —
5 3 4 3 3

49

6 6 — b7 6 6 7 6 5
3 4 3

54

[Ob solo]

60

[VI 1 solo] [Ob solo]

65

70

75

[Tutti]

80

Fin.

85

Adagio

89

Da Capo

Menuet alternat.



13



25



Menuet



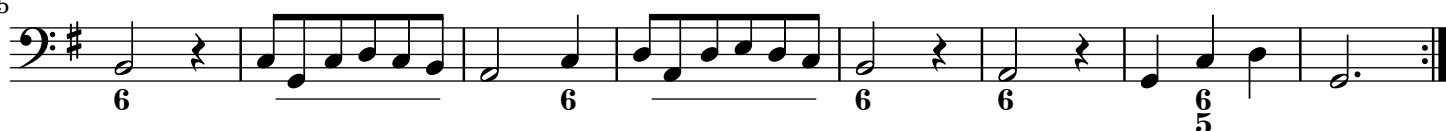
9



17



25



Echo



11



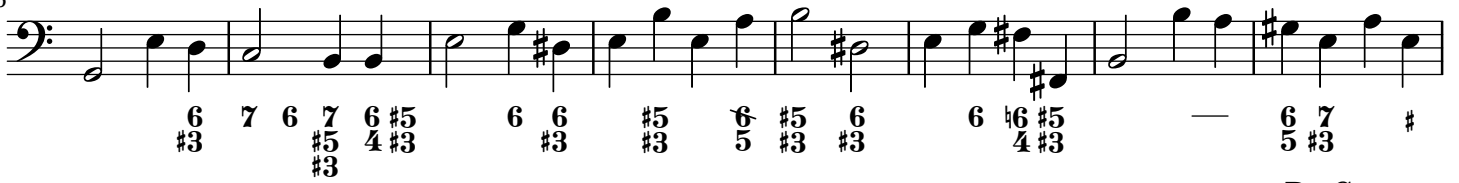
22



32



16



24

