

Double bass

Concerto for Orchestra

Allegretto ♩=104

Daniel Léo Simpson
Spring 1971
Tucson, Arizona

I



11

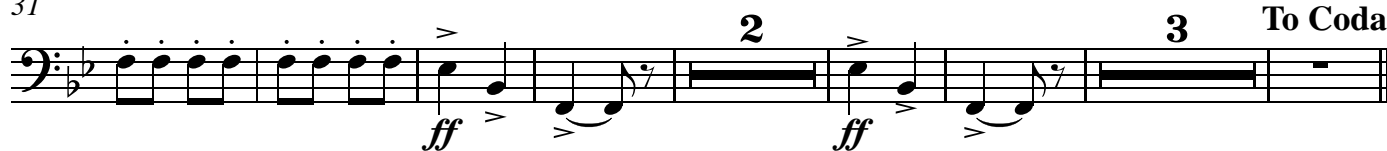


B

22



31

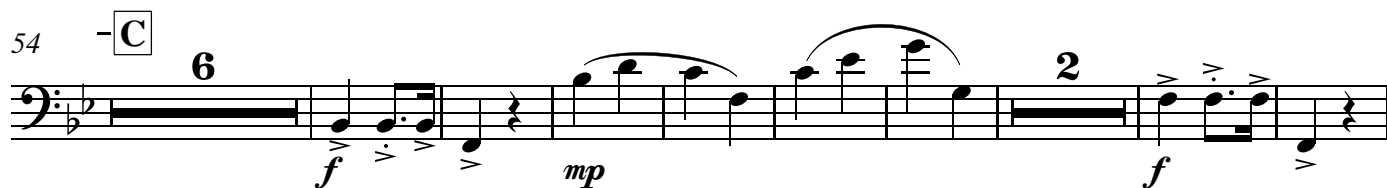


To Coda

43



54



70



Copyright 1971 by Daniel Léo Simpson
www.danielsimpson.com
cum sancto spiritu

79 *arco* *poco rit.* *f* *dim.* *mp*

86 **E** *Poco meno mosso* ♩=96 *pizz.* *arco* *accel.* *p* *cresc.*

102 *Tempo I* ♩=104 *mf* *mp* *mf* *<*

111

119 **F** *mf*

123 *D.S. al Coda* *2*

Coda

130 pizz. **poco meno mosso** rall. rit. . . .

mf *dim.* *mf* *dim.* *pp*

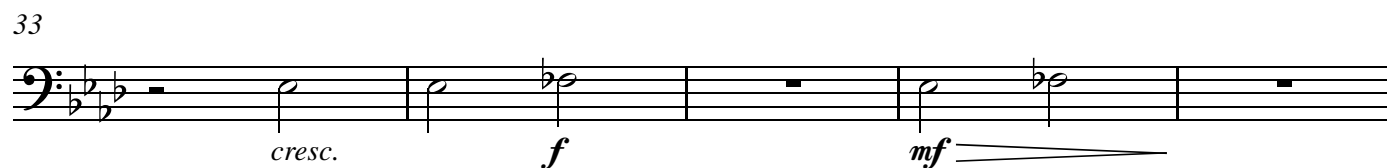
Double bass

Concerto for Orchestra

II

Daniel Léo Simpson
Spring 1971
Tucson, Arizona

Larghetto $\text{♩}=50$
pizz.



II - Concerto for Orchestra in Bb major - Simpson - 081517

38 pizz. **D** arco
p mp

44 *cresc. f dim. p* poco rit. .

47 **E** 5 **F** arco
mf a tempo poco rit.. a tempo

57 **G**
dim. > p mf cresc.

63 pizz. poco rit. . arco
f p cresc. p

69 **H** a tempo
mp cresc.

74 rit. meno mosso ♩=44 rit. .
mf dim. p pp

Double bass

Concerto for Orchestra

III

Daniel Léo Simpson

Spring 1971

Tucson, Arizona

Tempo di Ländler ♩=138

9 pizz. A arco pizz. *mp* *mf* *mp*

17

arco


B

cresc.

f

25

C Trio 4 pizz.



mf

36 D arco

43

Measure 43: Bass clef, B-flat major key signature. The measure contains a sequence of eighth and quarter notes with various accidentals, including a double sharp on F4.

51 **E**

mp *cresc.* *mp* *f*

V.S.

Double Bass

Concerto for Orchestra

IV

Daniel Léo Simpson
Spring 1971
Tucson, Arizona

Allegro ♩=132

11 *f* *p* *f* *mp*

17 **poco meno mosso** ♩=126 *f*

25 *mp* *rit.* *mf* *f* *dim.* *p*

33 **A** **a tempo** ♩=126 *mf* **To Coda** ☐

47 **B** 8 *f*

61 **C** 8 *mf* **D** 6

89 *mp* *f*

97 **E** *ff* *f* 8

111 **F** pizz. arco

mp

123 *f*

f

131 *più forte* *più forte*

più forte

139 **G** 16 D.C. al Coda

G 16 D.C. al Coda

159 Φ Coda

f *mp* *cresc.*

167 *mf* *mp* *cresc.* *mf*

mf *mp* *cresc.* *mf*

175 *mp* *cresc.* *ff*

mp *cresc.* *ff*

183