

Cornett

# 1719 Duet for Cornett and Soprano

Stephen W. Beatty (1938)

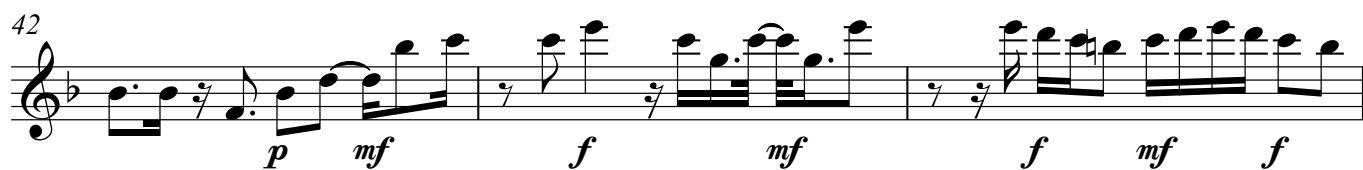
♩ = 85



38



42



45



49



53



57



61



65



69



73



77 *mp* *mf* *p* *f*

80 *mf* *p* *mp* *f* *mp* *mf* *mp*

84 *mf* *mp* *mf* *mp* *ff* *mp*

88 *mf* *pp* *mp*

92 *mf* *mp*

96 *mf* *mp* *mf*

100 *mp* *mf*

104 *mp* *mf* *mp* *pp* *mf*

107 *p* *pp* *mp* *p* *mp* *pp*

111 *p* *mp* *f* *mp*

## Cornett

115 *f* *mf* *p* *mp* *mf* *8va*

119 *pp* *mf* *mp* *mf*

123 *p* *pp* *p* *mp*

127 *mf* *mp* *mf* *mp* *mf*

131 *p* *mp* *mf* *mp*

135 *mf* *ff* *mp*

139 *mf* *mp* *mf* *mp* *mf*

143 *mp* *p* *mf* *p* *mf*

146 *8va* *mp* *mf*

149 *mp* *p* *mp* *mf*

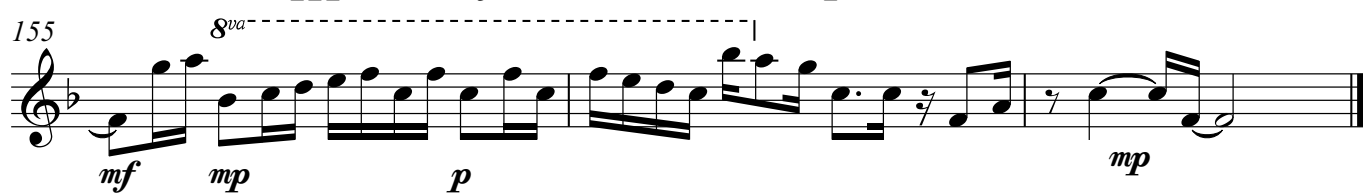
Cornett

5

153



155



Soprano

# 1719 Duet for Cornett and Soprano

Stephen W. Beatty (1938)

$\text{♩} = 85$

AA

5

9

13

18

21

24

28

32

*f* *mf* *f*

*mf* *f* *mf* *f*

*mf* *f*

*mf* *f*

*mf* *f* *mf* *mp* *f*

*mf* *f* *mf* *mp* *f*

*mf* *f* *mf* *f* *mf*

*f* *mf* *f*

35 *mf* *p* *mf* *mp*

39 *mf* *mp* *mf* *mp*

42 *f* *mf* *f* *mf* *f* *mf*

46 *f* *mf*

49 *f* *mf*

53 *mp* *mf* *mp* *mf* *f* *mf* *f* *mf*

56 *ff* *mf* *f* *mf* *f* *mp* *f*

62 *mf* *f* *mf*

66 *mp* *f* *mf*

69 *mp* *mf* *mp* *mf* *f* *mf*

Detailed description: This is a page of a musical score for Soprano, containing measures 35 through 72. The music is written on a single staff in treble clef. The key signature has one flat (B-flat). The time signature is 4/4. The score includes various dynamic markings: *mf* (mezzo-forte), *p* (piano), *mp* (mezzo-piano), *f* (forte), *ff* (fortissimo), and *mp* (mezzo-piano). The notation includes eighth notes, sixteenth notes, and quarter notes, with some measures containing rests. The piece concludes with a double bar line at the end of measure 72.

72 *f* *mf* *f* Soprano *ff* *f* 3

Staff 72-75: Treble clef, key signature of one flat. Measures 72-75 contain a melodic line with various dynamics: *f* (72), *mf* (73), *f* (74), *ff* (75), and *f* (76). The melody features eighth and sixteenth notes, some beamed together, and a final triplet of eighth notes.

76 *mf*

Staff 76-79: Treble clef, key signature of one flat. Measures 76-79 continue the melodic line. Measure 76 starts with a key signature change to two flats. Dynamics include *mf* (76), *mf* (77), *mf* (78), and *mf* (79). The melody consists of eighth and sixteenth notes.

80 2 *pp* *mp* *p* *mf* *mp*

Staff 80-83: Treble clef, key signature of two flats. Measures 80-83. Measure 80 has a whole rest with a '2' above it. Dynamics include *pp* (81), *mp* (82), *p* (83), *mf* (84), and *mp* (85). The melody features eighth and sixteenth notes.

86 *p* *ff* *mp* *mf* *p*

Staff 86-89: Treble clef, key signature of two flats. Measures 86-89. Dynamics include *p* (86), *ff* (87), *mp* (88), *mf* (89), and *p* (90). The melody consists of eighth and sixteenth notes.

89 *pp* *mp* *f* *mf* *p* *mf*

Staff 89-92: Treble clef, key signature of two flats. Measures 89-92. Dynamics include *pp* (89), *mp* (90), *f* (91), *mf* (92), *p* (93), and *mf* (94). The melody features eighth and sixteenth notes.

93 *f*

Staff 93-96: Treble clef, key signature of two flats. Measures 93-96. Dynamics include *f* (93), *f* (94), *f* (95), and *f* (96). The melody consists of eighth and sixteenth notes.

97 *mf* *f* *mf* *ppp* *f* *pp* *mf*

Staff 97-100: Treble clef, key signature of two flats. Measures 97-100. Dynamics include *mf* (97), *f* (98), *mf* (99), *ppp* (100), *f* (101), *pp* (102), and *mf* (103). The melody features eighth and sixteenth notes.

102 *mp* *mf* *f*

Staff 102-103: Treble clef, key signature of two flats. Measures 102-103. Dynamics include *mp* (102), *mf* (103), and *f* (104). The melody consists of eighth and sixteenth notes.

104 *mp* *mf* *mp*

Staff 104-107: Treble clef, key signature of two flats. Measures 104-107. Dynamics include *mp* (104), *mf* (105), *mf* (106), and *mp* (107). The melody features eighth and sixteenth notes.



107 *pp* *mf* *pp* *mp*

111 *pp* *mp* *mf* *p* *mf*

115 *pp* *mp* *mf*

118 *mp* *mf*

121 *mp* *pp*

125 *mf* *p* *mf*

128 *mp* *mf*

132 *mp* *mf* *f* *mf* *mp* *mf*

136 *f* *p* *mf*

140 *mp* *mf* *pp* *mf* *mp*

*f* *mf* Soprano

144

149 *p* *mf* *mp* *mf*

153 *f*

155 *mf* *mp* *p* *mf* *p* *mf*

This musical score for Soprano consists of four staves of music. The first staff (measures 144-148) begins with a half note G4, followed by a quarter rest, then a quarter note A4, and a quarter note B4. The second staff (measures 149-152) starts with a half note C5, followed by a quarter note D5, then a quarter note E5, and a quarter note F5. The third staff (measures 153-154) begins with a half note G5, followed by a quarter note A5, then a quarter note B5, and a quarter note C6. The fourth staff (measures 155-158) starts with a half note D6, followed by a quarter note E6, then a quarter note F6, and a quarter note G6. The score includes dynamic markings: *f* (forte) at measure 144, *mf* (mezzo-forte) at measure 145, *p* (piano) at measure 149, *mf* at measure 150, *mp* (mezzo-piano) at measure 151, *mf* at measure 152, *f* at measure 153, and *mf*, *mp*, *p*, *mf*, *p*, *mf* at measures 155 through 158 respectively. The music is written in treble clef with a key signature of one flat (B-flat).