

11^{ème} Trio pour 2 Violons et Violoncelle

op.4 n°5 - G.87

Violon I

Luigi BOCCHERINI

(1743 - 1805)

Moderato

I.

3

5

7

9

11

13

15

17

f *p* *f* *p* *f* *p* *f* *p* *rinf.* *p* *f* *p*

Violon I musical score, measures 19 to 44. The score is written in treble clef with a key signature of two sharps (F# and C#). The music features various dynamics and articulations.

Measures 19-21: Measure 19 starts with a forte (*f*) dynamic, followed by a piano (*p*) dynamic, and ends with a pianissimo (*pp*) dynamic. Measure 20 includes a trill (*tr*). Measure 21 is marked *pp*.

Measures 22-23: Measure 22 begins with a piano (*p*) dynamic. Measure 23 continues the piano (*p*) dynamic.

Measures 24-25: Measure 24 starts with a piano (*p*) dynamic. Measure 25 continues the piano (*p*) dynamic.

Measures 26-27: Measure 26 begins with a forte (*f*) dynamic, followed by a piano (*p*) dynamic. Measure 27 includes a trill (*tr*) and a forte (*f*) dynamic.

Measures 28-29: Measure 28 starts with a forte (*f*) dynamic, followed by a piano (*p*) dynamic. Measure 29 includes a trill (*tr*) and a forte (*f*) dynamic.

Measures 30-31: Measure 30 begins with a forte (*f*) dynamic. Measure 31 continues the forte (*f*) dynamic.

Measures 32-33: Measure 32 starts with a forte (*f*) dynamic. Measure 33 continues the forte (*f*) dynamic.

Measures 34-35: Measure 34 begins with a piano (*p*) dynamic. Measure 35 continues the piano (*p*) dynamic.

Measures 36-37: Measure 36 starts with a forte (*f*) dynamic. Measure 37 continues the forte (*f*) dynamic.

Measures 38-39: Measure 38 begins with a piano (*p*) dynamic. Measure 39 continues the piano (*p*) dynamic.

Measures 40-41: Measure 40 starts with a piano (*p*) dynamic. Measure 41 continues the piano (*p*) dynamic.

Measures 42-43: Measure 42 begins with a piano (*p*) dynamic. Measure 43 continues the piano (*p*) dynamic.

Measures 44-45: Measure 44 starts with a forte (*f*) dynamic, followed by a piano (*p*) dynamic, and ends with a forte (*f*) dynamic.

46 *p* *f*

48 *f*

50 *p* *sciolte*

53 *p* *f*

55 *p* *f* *p*

57 *f* *tr*

59 *pp* *f*

62 *p*

64 *f* *f* *p*

66 *f* *p* *f* *tr*

II. **Andantino ma con poco moto**

6

13

16

20

23

27

32

38

43

48

55

59

64

67

70

74

3

3

tr

rinf.

p

38

43

48

55

59

64

67

70

74

3

3

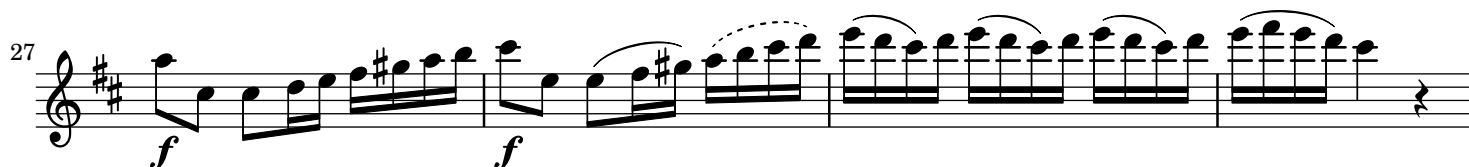
tr

rinf.

p

Tempo di Minuetto

III.



Violon I musical score, measures 46 to 91. The score is written in treble clef with a key signature of two sharps (F# and C#). The tempo is marked *f* (forte) at measure 46 and *pp* (pianissimo) at measure 51. The score includes various musical notations such as slurs, ties, trills (*tr*), and triplets (*3*). The key signature changes to one flat (Bb) at measure 63. The score concludes with a first ending bracket (*1*) and a *p* (piano) dynamic marking at measure 91.

96 *f*

100 *p* 3 3

105 3 3 3 3

109 *tr* *tr*

114

117 *f* *f*

120 *f* *p*

124

129 *tr* *f* *p*

133 *f*

137 *p* *rinf.* *f* *tr*

11^{ème} Trio pour 2 Violons et Violoncelle

op.4 n°5 - G.87

Violon II

Luigi BOCCHERINI

(1743 - 1805)

Moderato

I.

3

6

9

12

16

19

23

26

30

33 *f* *p*

36 *f* *p*

39

42 *p* *f* *p* *f*

46 *p*

49 *f*

52 *f* *p* *f* *p* *f* *p*

55 *f* *p* *f* *p* *f* *p* *p*

58 *p*

62 *pp*

65 *f* *p* *f* *p* *f*

Detailed description: This page contains the musical notation for the Violon II part, measures 33 through 65. The music is written on a single staff in treble clef with a key signature of two sharps (F# and C#). The notation includes various rhythmic values, slurs, and dynamic markings. Measures 33-35 feature a complex rhythmic pattern with sixteenth and thirty-second notes, marked *f* and *p*. Measures 36-38 continue this pattern. Measures 39-41 show a change in rhythm with eighth and quarter notes. Measures 42-44 feature a series of eighth notes with dynamic markings *p*, *f*, *p*, and *f*. Measures 45-47 show a return to sixteenth-note patterns, marked *p*. Measures 48-50 feature a series of eighth notes, marked *f*. Measures 51-53 show a complex rhythmic pattern with sixteenth and thirty-second notes, marked *f*, *p*, *f*, *p*, *f*, and *p*. Measures 54-56 feature a series of eighth notes, marked *f*, *p*, *f*, *p*, *f*, and *p*. Measures 57-59 show a series of eighth notes, marked *p*. Measures 60-62 feature a complex rhythmic pattern with sixteenth and thirty-second notes, marked *pp*. Measures 63-65 show a series of eighth notes, marked *f*, *p*, *f*, *p*, and *f*.

II. **Andantino ma con poco moto**

Sotto voce assai

8

16

21

27

35

42

48

55

62

67

72

III. *Tempo di Minuetto*

8

15

22

29

37

43

49

55

62

p *f* *p* *f* *p* *f* *p* *pp*

69

76

83

89

96

102

110

118

124

131

136

69: Treble clef, B-flat key signature. Measures 69-75: Eighth notes, slurs, and triplets.

76: Treble clef, B-flat key signature. Measures 76-82: Eighth notes, slurs, and triplets.

83: Treble clef, B-flat key signature. Measures 83-88: Eighth notes, slurs, and triplets.

89: Treble clef, B-flat key signature. Measures 89-95: Eighth notes, slurs, and triplets. Dynamics: p.

96: Treble clef, B-flat key signature. Measures 96-101: Eighth notes, slurs, and triplets. Dynamics: f.

102: Treble clef, B-flat key signature. Measures 102-109: Eighth notes, slurs, and triplets. Dynamics: p.

110: Treble clef, B-flat key signature. Measures 110-117: Eighth notes, slurs, and triplets. Dynamics: p. Measure 110 includes a first ending bracket and a trill (tr).

118: Treble clef, B-flat key signature. Measures 118-123: Eighth notes, slurs, and triplets. Dynamics: f. Measure 118 includes a first ending bracket and a fermata.

124: Treble clef, B-flat key signature. Measures 124-130: Eighth notes, slurs, and triplets. Dynamics: p.

131: Treble clef, B-flat key signature. Measures 131-135: Eighth notes, slurs, and triplets. Dynamics: f.

136: Treble clef, B-flat key signature. Measures 136-140: Eighth notes, slurs, and triplets. Dynamics: p.

11^{ème} Trio pour 2 Violons et Violoncelle

op.4 n°5 - G.87

Violoncelle

Luigi BOCCHERINI

(1743 - 1805)

Moderato

I.

4

8

12

16

20

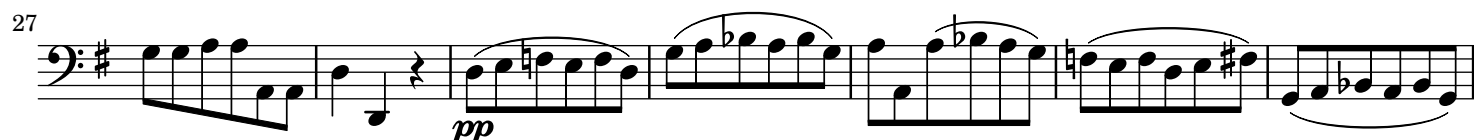
25

30

34 
38 
43 
47 
51 
55 
59 
64 

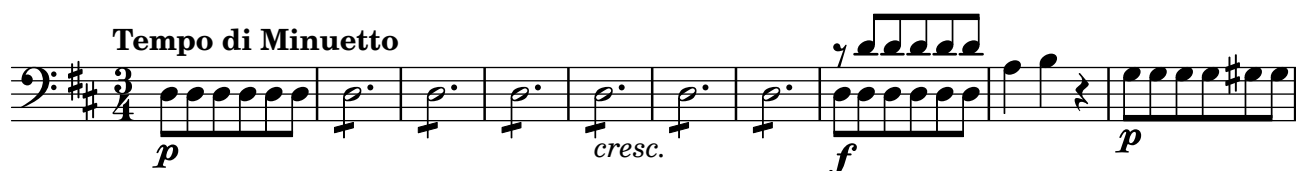
Andantino ma con poco moto

II.



Tempo di Minuetto

III.



30 *p*

40 *f*

49 *p*

58 *pp*

67

78

90 *p* *cresc.* *f*

101 *p*

109 *p* *f* *f*

120 *f* *p* *f*

131 *p* *p* *f*