

Sonata Opus 5 nr 5

A. Corelli

Arr. G.H.Kruihof

[illegible]

6

The first staff of music is in 12/8 time, featuring a key signature of one flat (B-flat). The notation includes a repeat sign at the beginning. The notes and their corresponding fingerings (indicated by numbers 3, 4, 5, 6) are as follows:

Measure	Notes (Pitch)	Fingerings
1	G2, A2	6, 6
2	Bb2, A2, G2	6, 5, 6
3	F2, E2, D2	6, 5, 6
4	C2, Bb1, A1	6, 5, 6
5	G1, F1, E1	6, 4, 3

10

10

4 # b6 6 5 6 4 5 3 6 6 5 6 4 5 3

13

[illegible]

22

22 

29

10

9 8 # 9 8 9 4 4 9 8 5 6 4 b 9 8 #

40

40

9 8 6 5 6 #4 6 4 7 b 7 7 7 #

53

65

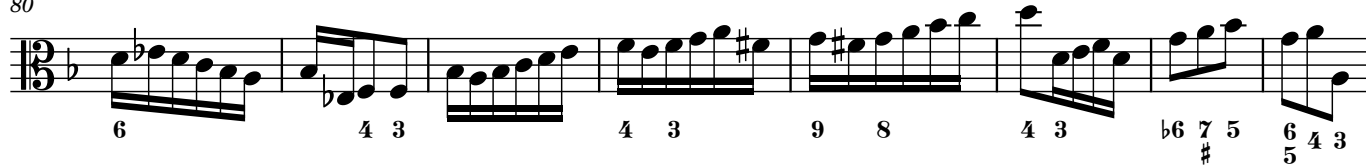
Musical notation for the bass line of 'The Rose Tree'. The key signature is one flat (B-flat). The melody consists of eighth and sixteenth notes, with some triplets indicated by a '3' over the notes. The bass line is written on a single staff with a treble clef.

2

73



80

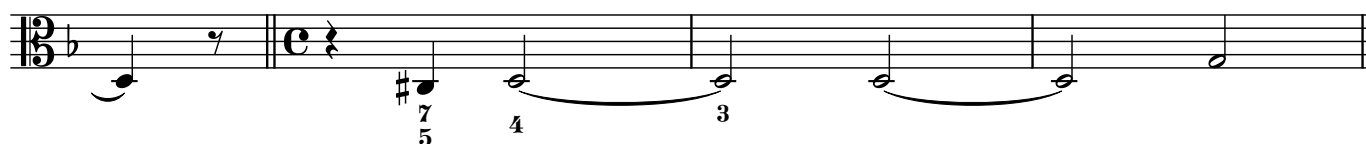


88



101

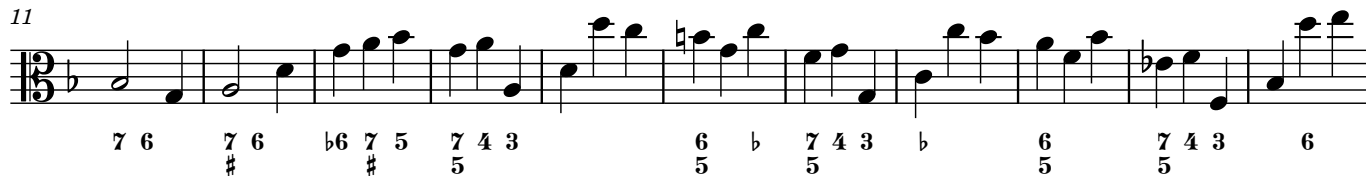
Adagio



Adagio



11



22



33



Vivace

10

20

29

43

57

67

74

81

85

6 # 6 4 3 5

6 b3 6 6 4 3 5

6 b3#4 6 4 3 # 7 6 # #

6 # 6 7 3 5 # b3 6 4 3

5 # 6 b3 6 6 4 #3 #

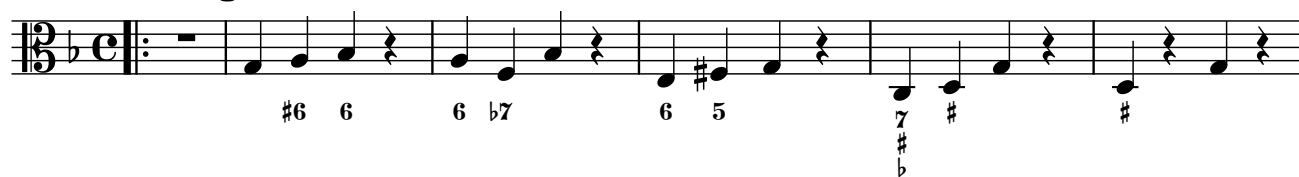
6 4 3

b # 4 3

b # 4 3

4

Giga



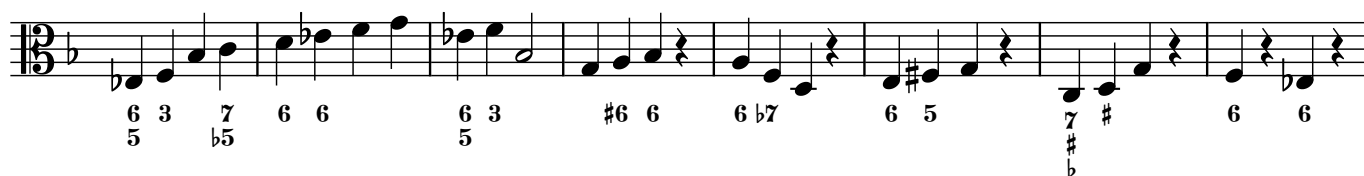
7



11



16



24

